

MAR/F/003

ADANI PETRONET DAHEJ PORT – PORT INFORMATION BOOK



ADANI PETRONET (DAHEJ) PORT LIMITED



PORT & TERMINAL INFORMATION BOOK

*WELCOMES THE MASTER, OFFICERS & CREW
OF*

MV _____

Reviewed By: Capt. Alok Priyadarshi	Issue No: 00	Revision No: 02
Approved By: Capt. Girish Chandra	Issued on: 03 Aug 2025	

GENERAL INTRODUCTION

ADANI PETRONET (DAHEJ) PORT LTD.- AP(D)PL WELCOMES THE MASTER, OFFICER AND CREW TO DAHEJ PORT

LEGAL DISCLAIMER

AP(D)PL makes every effort to make and maintain the contents of this document as up-to-date, accessible, error free and complete as possible, but the correctness and completeness of these contents cannot be guaranteed. AP(D)PL accepts no liability whatsoever for the occurrence and/or consequences of errors, faults or incompleteness or any other omission in connection with the information provided by this document. In case of any discrepancies or inconsistencies between this document and the applicable legislation, including the port bye laws, the later will prevail.

WEBSITE OF THE PORT

<https://www.adaniports.com/Ports-and-Terminals/Dahej-Port>

LINK FOR BPTS, TIDE TABLE & TRADE NOTICES

<https://www.adaniports.com/ports-and-terminals/dahej-port/download>

LINK FOR SWACHCHHA SAGAR Reporting

<https://swachhsagar-dgs.in/>

<https://prf.swachhsagar-dgs.in/anf>

LINK FOR Dahej Weather Forecast

https://nwp.imd.gov.in/blf/blf_block.php?dis=12BHARUCH

Reviewed By: Capt. Alok Priyadarshi	Issue No: 00	Revision No: 02
Approved By: Capt. Girish Chandra	Issued on: 03 Aug 2025	

TABLE OF CONTENT

GENERAL INTRODUCTION	1
TABLE OF CONTENT	3
RECORD OF CORRECTION	7
ABBEVIATION USED	8

PART I: INTRODUCTION, CONTACT INFORMATION & REGULATIONS

1. INTRODUCTION

a. Introduction Letter	11
b. Standard Message	12
c. Port Report	13
d. Port Performance	13

2. CONTACT INFORMATION AND REGULATION

a. Contact Information	14
b. Rules and Regulation	14
c. Exemption and Permits	14

PART II: NOTIFICATION, DOCUMENTATION AND REPORTING

3. ARRIVAL DEPARTURE CHECK LISTS

a. Arrival Checklists	16
b. Departure Checklists	16

4. NOTIFICATION

a. Health	17
b. Immigration	18
c. Customs	18
d. ETA	19
e. ETD	19
f. Security	20
g. Dangerous Goods	20
h. Waste	20
i. IOPP	20

Reviewed By: Capt. Alok Priyadarshi	Issue No: 00	Revision No: 02
Approved By: Capt. Girish Chandra	Issued on: 03 Aug 2025	

5. DOCUMENTATION

- a. Required documentation, to be available at all times 21

6. REPORTING

- a. Issues to be reported 24

PART III: PORT DESCRIPTION AND NAVIGATION

7. PORT DESCRIPTION

- a. Port Location 26
- b. Port Limits 27
- c. Load Lines 27
- d. Maximum Size Vessels 27
- e. Time Zone 27
- f. Local Holidays 27
- g. Working Hours 27
- h. Traffic 27
- i. Cargo 28
- j. Charts and Publications 28
- k. Shipping announcement for the port area 28
- l. Pilot Station & Pilot Pick- up 28
- m. Port Infrastructure 29
- n. Port Accommodation and Berth 30
- o. Weather and Tidal Information 30
- p. Webcams 31

8. PORT NAVIGATION

- a. Speed 32
- b. UKC 33
- c. Right of the Way 33
- d. Spacing of Vessels 33
- e. Passing Arrangement 33
- f. Restrictions 33
- g. Inward and Outward- Bound Vessels 34
- h. Shifting Vessels 34
- i. Docking 34
- j. Display of Signals and Lights 34

PART IV: PORT SAFETY AND SECURITY

9. PORT SAFETY

- a. Emergency Contact 37
- b. Emergency Response Equipment 37
- c. Pollution & Oil Spill Equipment 38
- d. Emergency Co-ordination Centre 39
- e. Emergency Scenarios 39

Reviewed By: Capt. Alok Priyadarshi	Issue No: 00	Revision No: 02
Approved By: Capt. Girish Chandra	Issued on: 03 Aug 2025	

10. PORT SECURITY

- a. Present ISPS Security Information 41
- b. Reporting to Port Facility 41
- c. Prohibition on use of Thuraya & Iridium satellite phones 42

PART V: NAUTICAL SERVICES AND COMMUNICATION

11. NAUTICAL SERVICES

- a. VTMS Services at Gulf of Khambhat 45
- b. Pilotage 45
- c. Tugs 45
- d. Mooring 46
- e. Lashing of Cargo 51

12. NAUTICAL SERVICE

- a. Communication Method 52

PART VI: PORT OPERATIONS

13. CARGO OPERATION

- a. Loading/ Discharging Procedures 54
- b. Cleaning Procedures 56

14. VESSEL OPERATION

- a. Lowering Boats and Rafts 57
- b. Maintenance and Repair 57
- c. Underwater Inspection/Cleaning 57
- d. Razor Wire 57
- e. Soot Blowing 57
- f. Sea Trials 57

15. PORT INSPECTION

- a. Inspection from Port state Control and/or Other Parties 58

PART VII: PORT SERVICES

16. PORT SERVICES

- a. Fuel and Lubrication Oil 60
- b. Fresh Water 60
- c. Stores 60
- d. Shore Based Electricity 60
- e. Waste Disposal 61
- f. Repair 61
- g. Ship Sanitation 61

Reviewed By: Capt. Alok Priyadarshi	Issue No: 00	Revision No: 02
Approved By: Capt. Girish Chandra	Issued on: 03 Aug 2025	

h. Surveyors	61
i. Shipping Agents	61
j. Medical Facilities	61
k. Seaman's Missions	62
l. Transport	62
m. Sludge Removal	62
n. Custom / Immigration	62
o. Shore Crane and Hydra	62
p. Tug and Boat	62
q. Airport	62
r. Nationalised Bank in Port	62
s. Telephone	63
t. Duty Free Shops	63
u. Security Procedure for Crew to Visit Seaman's Shopping Center	63
v. Shore Leave	63
w. Shore Gangway	63
x. Dahej Charts Conveying by Berthing Pilot	63
y. Liferaft & Lifeboat/Rescue Boat Servicing	63

Annexure I- LAY OUT PLAN ADANI DAHEJ PORT- AP(D)PL	64
Annexure II- PORT AND BERTH INFORMATION AT A GLANCE	65
Annexure III- CONDITION OF USE	68
Annexure IV- MASTER PILOT INFORMATION EXCHANGE	69
Annexure V- TIDE TABLE	71
Annexure VI- WEATHER	74
Annexure VII- BUOYAGE SYSTEM WITH CO-ORDINATES	75
Annexure VIII- DEEP WATER ROUTE	77
Annexure IX- VTMS COVERAGE	78
Annexure X- NAVAREA/ METAREA DIAGRAM	79

Reviewed By: Capt. Alok Priyadarshi	Issue No: 00	Revision No: 02
Approved By: Capt. Girish Chandra	Issued on: 03 Aug 2025	

ABBREVIATION USED

AP(D)PL	Adani Petronet Dahej Port Limited
BPTS	Berthing Policy and Traffic Structure
CD	Chart Datum
CH	Channel
COLREG	Convention on the International Regulations for Preventing Collisions at Sea
DGS	Director General of Shipping
DOS	Declaration of Security
ETA	Estimated Time of Arrival
ETD	Estimated Time Of Departure
FCC	Fertilizer Cargo Complex
GCPL	Gujarat Chemical Port limited
GMT	Greenwich Mean Time
GRT	Gross Registered Tonnage
HF	High Frequency
IALA	International Association of Lighthouse Authorities
IOPP	International Oil Pollution Prevention
ISPS	International Ship and Port Facility Security
IWPM	Inward Pilor Memo
MARPOL	International Convention for the Prevention of Pollution from Ships
MF	Medium Frequency
MMSI	Maritime Mobile Service Identity
MOB	Man Overboard
NE	North-East
NOR	Notice of Readiness
NRT	Net Registered Tonnage
NSPC	Navigational Safety Port Committee
OPL	Outside Port Limit
OSD	Oil Spill Dispersant
OWPM	Outward Pilot Memo
PANS	Pre- Arrival Notification of Security
PBG	Pilot Boarding Ground
PFSO	Port Facility Security Officer
PHO	Port Health Officer
PIB	Pilot Information Book
PLL	Petronet LNG Limited
POB	Pilot On Board
POC	Port Operation Centre
SCBA	Self-Contained Breathing Apparatus

Reviewed By: Capt. Alok Priyadarshi	Issue No: 00	Revision No: 02
Approved By: Capt. Girish Chandra	Issued on: 03 Aug 2025	



ADANI PETRONET (DAHEJ) PORT LIMITED INTEGRATED MANAGEMENT SYSTEM FORMATS MANUAL

SEZ	Special Economic Zone
SOF	Statement of Facts
SOLAS	Safety of Life at Sea
SW	South-West
SWL	Safe Working Load
TPH	Ton per hour
UKC	Under Keel Clearance
VTMS	Vessel Traffic Management System
VTS	Vessel Traffic Services

[Back to Index](#)

Reviewed By: Capt. Alok Priyadarshi	Issue No: 00	Revision No: 02
Approved By: Capt. Girish Chandra	Issued on: 03 Aug 2025	

Part I

Introduction

Contact Information & Regulations

Reviewed By: Capt. Alok Priyadarshi	Issue No: 00	Revision No: 02
Approved By: Capt. Girish Chandra	Issued on: 03 Aug 2025	

INTRODUCTION

Dear Captain,

We welcome you and crew to Adani Petronet (Dahej) Port Limited

- A.** For your information and compliance, we enclose the following documents.
 - a. Condition of Use Document
 - b. Safety & Pollution Prevention Requirements
 - c. General Information
 - B.** Please note that "CONDITION OF USE" letter is a legal document and is to be filled up, signed, stamped and delivered to the pilot before commencement of Pilotage. The following documents are to be completed and handed over to the Pilot:
 - a. Inward Pilot Certificate (after berthing).
 - b. Declaration of Security (DOS).
 - c. Ship Shore Safety Checklist.
 - d. Feedback Form (To be handed over to the Sailing Pilot).
 - e. Outward Pilot certificate (To be handed over to the Sailing Pilot).
1. **RESPONSIBILITY:** While we have taken all reasonable care to ensure that the Port waters, berths, facilities as well as gear and equipment used (including gangway where provided) thereon, are safe and efficient, any vessel using them shall do so, and remains, at the sole risk of the vessel, its Master and Owners.
 2. **SAFETY & POLLUTION PREVENTION:** You are required to take careful note of the contents of Safety and Pollution Prevention Requirements and ensure full compliance. Before commencement of operations, the Ship-Shore Safety Checklist will be completed by Port Representative/Pilot and a responsible ship's officer and will be revalidated at regular intervals.
 3. **NON- COMPLIANCE:** Any non-compliance or infringement of the Checklist or of Safety and Pollution Prevention Requirements by the vessel may result in operations being halted and the vessel ousted from the berth. All time, charges, delays arising from such an event will be on the vessel's account.
 4. **CONTRABAND & LIQUOR:** Dealing in contraband and drugs and illicit goods is strictly forbidden under Indian Law, with heavy penalties and imprisonment for anyone indulging in such activities. You are advised to ensure that your crew is suitably instructed.
 5. The use and possession of alcohol is forbidden in Gujarat State. Alcohol should not be taken ashore or offered to Shore personnel during the vessels stay in port. All such contraventions of the Laws could also make the vessel liable to be arrested. So please ensure your fullest attention to these matters.
 6. As per Directorate General of Shipping (DGS) Order No. 02 of 2012, "The use of Thuraya, Iridium and other such Satellite phone is banned in India under Sec 6 of Indian Wireless Act and Sec 20 of Indian Telegraph Act." and hence should not be in use and should be declared in the PANS.
 7. **DEALING WITH THIRD PARTY VENDORS:** Kindly note that request for any service required by your vessel should be routed through Agency and you are advised to deal only with those third-party vendors who are recommended by your agent and authorized by the port.

We hope you have a pleasant stay.

Yours truly,

Head - Marine Services,

Adani Petronet (Dahej) Port Limited,

Mob +91 6357231712 / +91 26412851020,

Email: Girish.chandra2@adani.com; Web: www.adani.com,

At & PO Lakhigam, Taluka Vagra, Via Dahej, Bharuch- 392 130, Gujarat, India.

Reviewed By: Capt. Alok Priyadarshi	Issue No: 00	Revision No: 02
Approved By: Capt. Girish Chandra	Issued on: 03 Aug 2025	

STANDARD MESSAGE

Please acknowledge receipt of this Standard Message.

Please advise your best ETA in local time in HHMM format (UTC +5.5 hr) at 120, 72, 48, 24, & 12 hour before arrival at the pilot boarding point. Vessel has given at least 5/3/2/1 days notices of Expected Time of Arrival (ETA), except vessels calling from nearby ports or the voyage duration is around 1 day, which are required to provide one day notice.

AP(D)PL Terminal may be contacted on the following:

Adani Port/ Marine Control:

Call Sign : **Adani Port Control**
Mobile : **+91-9687695730**
Phone : **+91-2641-285030**
Email : marinecontrol.dahej@adani.com
VHF Channel : **16 & 73 (about 3-4 hr before arrival)**

Port Operation Centre (POC):

Mobile : **+91-6358910530, +91-7228939423**
Phone : **+91-2641-285049**
Email : portopscenter.dahej@adani.com

Pilotage is compulsory. Pilot will board vessel **by tug** at Pilot Boarding Position.

- a.** Kindly provide a good pilot ladder/combination ladder complying with SOLAS- Chapter V- Reg 23 on your lee side about 3.5 meters above the water level with gangway about 7meters above water level.
- b.** Pilot boarding speed should be about 2- 3 knots.
- c.** Do not use mechanical hoist or weighted heaving lines or forward-facing accommodation ladders.
- d.** Tugs will be made fast using **heavy tug's rope**. Please prepare **strong messenger rope with a heaving line** to pick up the tug rope.
- e.** Your agent, customs, port health authorities, surveyors, will board your vessel once the vessel is alongside and all made fast.

Use of Tugs is mandatory. The pilot will discuss tug's arrangements with the Master.

Kindly complete the following documents and revert by e-mail **as soon as the vessel is declared.**

Reviewed By: Capt. Alok Priyadarshi	Issue No: 00	Revision No: 02
Approved By: Capt. Girish Chandra	Issued on: 03 Aug 2025	

PORT REPORT

AP(D)PL is privately developed terminal within Dahej Harbor situated in SEZ. It is spread over 68 hectares in the Northern Gulf of Khambhat, Gujarat, on the western coast of India. The port is located enroute major maritime routes and serves as one of the country's most convenient gateways for Ex-Im. Its proximity to land locked hinterland of North and North-West India gives it a strategic advantage to service the Industry and Trade.

Operational since 2010, AP(D)PL is expected to achieve cargo volumes of 16 million tons. Adani group's passion for converting opportunity into reality has led AP(D)PL to reach to a new high.

PORT PERFORMANCE

- AP(D)PL Dahej handles Bulk (Dry), Break Bulk & Project Cargo. This Port has a unique advantage of connection from Sea, Road, and Railroad mode.
- 2 operational berths having sufficient depth to handle dry bulk and Project Cargo of draft upto 14.0 m. The berths are capable of handling Newcastlemax (Max draft 12.5 m), Cap size (Max draft 12.5 m), Baby Cap size (Max draft 14 m), Kamsarmax (Max draft 14 m), Panamax (Max draft 14 m), Handymax (Max draft 14 m) and smaller vessels (Max draft 14 m).
- AP(D)PL has its own dedicated 64 km private rail network. It provides logistic advantage of 380 km to the Northern hinterland of India as compared to JNPT.
- AP(D)PL is well connected to SH 206, SH 6 which further connects to NH 48.
- Dahej is also well connected to two commercial airports which are within distance of 150 km from Dahej.
- Dry cargo infrastructure capable of handling all types of dry cargo.
- A 10.01 km long import conveyor system capable of handling 4200/ 2500(stacking / reclaiming) TPH of import cargo.
- F.C.C– Fertilizer Cargo Complex. Mechanized system for bagging and loading of fertilizer bags into railway wagons for fast evacuation of cargo.
- Large storage capacity is available within the port in the form of open and covered warehouses.

Reviewed By: Capt. Alok Priyadarshi	Issue No: 00	Revision No: 02
Approved By: Capt. Girish Chandra	Issued on: 03 Aug 2025	

CONTACT INFORMATION AND REGULATION

CONTACT INFORMATION

Adani Port/ Marine Control:

Call Sign	:	Adani Port Control
Mobile	:	+91-9687695730
Phone	:	+91-2641-285030
Email	:	marinecontrol.dahej@adani.com
VHF Channel	:	16 & 73 (about 3-4 hr before arrival)

Port Operation Center (POC):

Mobile	:	+91-6358910530, +91-7228939423
Phone	:	+91-2641-285049
Email	:	portopscenter.dahej@adani.com

RULES AND REGULATION

The rules and regulation of the port contribute to the safe, efficient and environmentally responsible handling of shipping traffic. The international rules of IMO, such as SOLAS convention and its amendments and national regulations are in force AP(D)PL Dahej port.

APPLICABLE REGULATION

- Port Security Law (ISPS)
- Indian Port Act
- Gujrat Maritime Board Act 1981
- Navigational Safety Port Committee (NSPC)
- All relevant international rules and regulations on MARPOL, Load lines Etc.

EXEMPTION AND PERMITS

The port operation center can grant permission for special activities such as repairs/ hot work/ cleaning etc. All request to be sent to Port Operations Center through local agent via E mail portopscenter.dahej@adani.com

Reviewed By: Capt. Alok Priyadarshi	Issue No: 00	Revision No: 02
Approved By: Capt. Girish Chandra	Issued on: 03 Aug 2025	

Part II

Notification, Documentation and Reporting

Reviewed By: Capt. Alok Priyadarshi	Issue No: 00	Revision No: 02
Approved By: Capt. Girish Chandra	Issued on: 03 Aug 2025	

ARRIVAL DEPARTURE CHECK LISTS

ARRIVAL CHECKLISTS

Documents	When	To Whom & How
The vessel has duly submitted the required Declaration / statutory compliance of government directives as issued from time to time. [Vessel owner / agents are required to declare their vessels in the prescribed format, giving full details].	At least 24/96 hours prior to the arrival of the vessel.	Port Operation Center through local agent by E-mail to below mail id- portopscenter.dahej@adani.com & Marinecontrol.dahej@adani.com
Pre-Arrival Notification of Security (PANS), Crew list and Port call details	At least 24/96 hours prior to the arrival of the vessel.	Port Operation Center, Indian coast guard, GMB and Indian Navy directly or through local agent by email to below email id's- Indsar@vsnl.net , cgs-mdr@indiancoastguard.nic.in , wncmcomb-navy@nic.in , mrccwest@indiancoastguard.nic.in , pomgmb@yahoo.in , cgs-ppv@indiancoastguard.nic.in , dhq1@indiancoastguard.nic.in , portopscenter.dahej@adani.com
Free Pratique Documents	At least 72 hours prior to the arrival of the vessel.	Port Health Organisation by Email to below mail id- phokandla@gmail.com
Arrival information to VTS	Before arrival in Gulf of Khambhat	VTS information through agent or directly send mail to- vtskhambhat@aatash.com

DEPARTURE CHECKLISTS

Departure information to VTS	Before departure from Gulf of Khambhat	VTS information through agent or directly send mail to- vtskhambhat@aatash.com
------------------------------	--	--

Reviewed By: Capt. Alok Priyadarshi	Issue No: 00	Revision No: 02
Approved By: Capt. Girish Chandra	Issued on: 03 Aug 2025	

NOTIFICATION

HEALTH

Source: Port Health Organisation

Yellow Fever Countries- Vessel must inform the port, via agent, if vessel has visited any yellow fever affected area in the last one month. If yes, local agent must make an arrangement for PHO clearance. PHO may board vessels at anchorage. Vessels are requested to contact their local agent for clarification.

The master must complete and sign a "Maritime Declaration of Health". The standard forms must be used. In all cases keep the "Maritime Declaration of Health" form on stand- by.

In case of an epidemic threat the master can be requested to report the health situation on board to Adani Port / Marine Control on VHF Ch 73 and must inform customs and immigration through agent.

Definition:

Free pratique: means permission for Ship/ vessel to enter the port limits, embark or disembark, discharge or load cargo or stores.

Quarantine: means the restriction of activities and/or separation of suspected person who are ill or of suspect's baggage, containers, ship/vessel or goods from others in such a manner as to prevent the possible spread of infection or contamination.

Free Pratique is granted by Public Health officer (PHO). Any ship/ vessel coming within 30 days from yellow fever affected countries as notified by WHO shall be inspected by Port Health Officer before granting free pratique as per Annex 8. For vessels that arrive from epidemic affected countries, same procedure will be followed. The person so affected will have to be kept in quarantine for the entire duration of vessels stay in port limits.

Annexure –8

List of yellow fever endemic countries

Countries in the Yellow Fever-Endemic Zone

Africa			Central and South America
Angola	Ethiopia	Rwanda	Argentina ¹
Benin	Gabon	Senegal	Bolivia ¹
Burkina Faso	The Gambia	Sierra Leone	Brazil ¹
Burundi	Ghana	Sudan	Colombia
Cameroon	Guinea	Togo	Ecuador ¹
Cape Verde	Guinea-	Uganda	French Guiana
Central African Republic	Bissau		Guyana
Chad	Kenya		Panama ¹
Congo	Liberia		Paraguay ¹
Côte d'Ivoire	Mali		Peru ¹
Democratic Republic of Congo	Mauritania		Suriname
Equatorial Guinea	Niger		Trinidad and Tobago
	Nigeria		Venezuela ¹

source: WHO (amenable for the periodic changes)

Rev
App

IMMIGRATION

Source: Dahej Marine Police (responsible for Immigration)

Prior to arrival Dahej Port, the Master of the vessel should forward the following documents via agent:

- forward a Crew and Passenger list to Immigration
- Report the presence of any stowaways

Immigration officials will board the vessel to carry out a physical inspection for border control purposes once the vessel comes along side. During an inspection of this kind, the Master must present and offer his full co-operation during the inspection.

CUSTOMS

Source: Indian Customs

Detailed list of the documents required to be asked from agent prior to arrival. The following documents must be available:

- cargo-statements (e.g. bills of lading)
- crew's effects declaration
- vessel stores declaration

It is strongly recommended that these papers are in hand before arrival in port.

Goods which are not to be cleared, must be stored in one room, which room can be sealed by Customs. It is recommended to put these goods in that room before entering the harbour. Masters of ships must be careful that these seals are not damaged. If renewal or removal is wanted, this can be applied by Customs.

If an incoming vessel is within Dahej Port limit and has not been cleared by Customs, it is strictly forbidden:

- to allow any person to board the ship
- to allow any member of the crew to disembark
- to load or unload any goods
- to allow contact with any other craft

The following person are exempted from these rules:

- Commissioned and licensed pilots
- Harbour Master's representatives
- Customs officers
- Agents in possession of special permits
- Personnel on tugs employed in assisting the vessel
- Port Health Officer

Reviewed By: Capt. Alok Priyadarshi	Issue No: 00	Revision No: 02
Approved By: Capt. Girish Chandra	Issued on: 03 Aug 2025	

ETA

Vessel has given at least 5/3/2/1 days notices of Expected Time of Arrival (ETA), except vessels calling from nearby ports or from within the Gulf of Khambhat which are required to provide 1 day notice. Vessel which has physically arrived within the port limits & registered herself with Adani Port / Marine Control on VHF CH 73 by giving all the vessels particulars.

Please note following regarding Inward Pilot Request-

- Inward Pilot request Minimum notice 1 hr 45 minutes from Pilot request time
- Pilot Cancellation and amendment can be accepted through email or through VHF on Channel 73 to AP(D)PL Adani Port/ Marine Control with minimum 1 hr notice for IWPM.
- Only one cancellation and revision will be accepted. Thereafter minimum 2hrs notice must be given for revision of pilot request.
- A vessel whose OWPM & IWPM timing have been amended will be given a pilot only after all other planned movements have been carried out

Physical arrival of any vessel is considered as per below-

1. If Pilot boards the vessel on arrival, then the Pilot boarding time will be considered as the Arrival (NOR) time.
2. If vessel does not get Pilot on arrival and the vessel drops anchor then,
 - a) Inside the Port Limit: the anchor dropped time will be considered as Arrival (NOR) time.
 - b) Outside Port limit: the anchor dropped time will be considered as Arrival (1st NOR) time & POB time will be considered as 2nd NOR time.
3. In case a vessel drops anchor in the port anchorage area but does not file Inward Pilot request then the time of filing the inward pilot request will be considered as Arrival (NOR) time

After Pilot boards, kindly fill up the following documents and return to the Pilot, duly signed and stamped: -

- a. Acknowledgement Copy of "Condition of Use" letter (Yellow Copy).
- b. Master's Declaration (White Form).
- c. Declaration of Security (white Form).
- d. Inward Pilotage Certificate (Pink Form).

ETD

Vessel should be ready in all respect for sailing before Pilot boarding time. All shore personal must be disembarked prior pilot boarding. Vessel must confirm the exact Pilot boarding time from Adani Port/ Marine Control on VHF CH 73.

Please note following for OUTWARD Pilot Request-

- Outward Pilot request Minimum notice 1 hr 30 min from Pilot request time.
- Pilot Cancellation and amendment can be accepted through email or through VHF on Channel 73 to AP(D)PL Adani Port / Marine Control with minimum 1 hr notice for OWPM.

Reviewed By: Capt. Alok Priyadarshi	Issue No: 00	Revision No: 02
Approved By: Capt. Girish Chandra	Issued on: 03 Aug 2025	

- Only one cancellation and revision will be accepted. Thereafter minimum 2hrs notice must be given for revision of pilot request.

[Back to Index](#)

- A vessel whose IWPM timing have been amended will be given a pilot only after all other planned movements have been carried out

Prior to vessel's departure, kindly fill up, "Outward Pilot Certificate (Pink form)" for the section regarding the Port Clearance and Vessel's Particulars provided in the booklet, which will be collected by pilot with him before disembarkation.

SECURITY

All vessels calling AP(D)PL to forward Pre-Arrival Notification of Security (PANS), Crew list and Last Port of call details to Port Operation Center through local agent 24 before ETA.

DANGEROUS GOODS

N/A

WASTE

Vessels calling AP(D)PL are required to access the "Swachh Sagar Portal" and give details of required data including inventory of ship generated waste onboard. This information and inventory is to be filled up irrespective of whether the ship intends to use port reception facility or not. If the ships are at anchorage, such details are to be filed up weekly.

In case port reception facilities are required then same is to be preferably requested 24 hours or more prior arrival through this portal.

<https://prf.swachhsagar-dgs.in/anf> .

ANF number generated in the process must be communicated to Port Operations Center through local agent.

IOPP

Vessels calling AP(D)PL to have valid IOPP certificate onboard.

Reviewed By: Capt. Alok Priyadarshi	Issue No: 00	Revision No: 02
Approved By: Capt. Girish Chandra	Issued on: 03 Aug 2025	

DOCUMENTATION

REQUIRED DOCUMENTATION, TO BE AVAILABLE AT ALL TIMES

All statutory and international sailing certificates should be always available onboard.

Master / Agent of vessel calling at Adani Dahej must provide copy of following documents / certificates of the vessel (soft copy as well as Hard copy).

Please see below-

A. Before Arrival / Berthing of vessel -

- Berthing application - MAR/ F/ 004
- Vessel & cargo particulars part A - MAR/ F/ 001
- Vessel acceptance navigational checklist- Part B
- List of 10 Ports of Call
- P & I Club Certificate
- IMO Crew List
- Ship's Particulars
- Certificate of Registry
- Certificate of Class
- International Tonnage Certificate
- International Load Line Certificate
- IOPP Certificate
- ISPS Certificate
- Stowage Plan Last Port Clearance
- Safe Manning Certificate
- International Air Pollution Prevention certificate (IAPP)
- ISM Safety Management Certificate (SMC)
- Documents of compliance
- Liability for the Removal of Wrecks Certificate
- Civil Liability Convention (CLC) 1992 Certificate
- International ship security certificate
- Civil Liability for Bunker Oil Pollution Damage Convention
- Ship sanitization control Exemption
- Safety equipment certificate
- Safety construction certificate
- Safety Radio certificate.
- Ballast water Management system certificate
- Load port and/or interim ports Draft Survey report (if applicable)
- SOF and Protest letter (if any) issued at Load port and/or interim ports (if applicable)
- Bilges / sounding tank report
- Ballast – De-Ballast report during the voyage (if any)
- Last Rightship Inspection certificate
- Pre arrival notices of 5/3/2/1 days, PANS as per ISPS Code requirement

Reviewed By: Capt. Alok Priyadarshi	Issue No: 00	Revision No: 02
Approved By: Capt. Girish Chandra	Issued on: 03 Aug 2025	

- Annexure 1: Clean COU without any remarks to be signed by vessel Master.
- Annexure 2: Undertaking letter from Owner.
- Annexure 3: Declaration by vessel master (FAL Forms) as per below as applicable-
 - a) General Declaration (FAL Form 1)
 - b) Cargo Declaration (FAL Form 2)
 - c) Ship's Stores Declaration (FAL Form 3)
 - d) Crew's Effects Declaration (FAL Form 4)
 - e) Crew List (FAL Form 5)
 - f) Passenger List (FAL Form 6)
 - g) Dangerous Goods Manifest (FAL Form 7)

B. After Berthing of vessel -

- Ship / Shore Safety Check List
- DOS (Declaration of Security)
- Discharging Sequence
- Safety Precaution to be followed during vessel stay at port

C. Before Un-berthing of Vessel -

- Service Certificate
- Marine Feedback Form
- Ballast Water Reporting Form
- Ship Waste Assessment Form MARPOL

D. Custom Authority -

1. Original Last Port Clearance
2. Maritime Declaration of Health- 3 Copies
3. Vaccination List- 3 Copies
4. Voyage Memo (Ports called in last 30 days or last 10 ports of call) with arrival and departure dates and security levels)- 3 copies
5. Bills of Lading, Cargo Manifest and Transit Cargo if any - 1 Copy
6. List of Ships Stores Including Bonded Stores and Deck Store- 3 copies
7. Personal Effects Declaration with Crew Currency- 3 Copies
8. Ships Currency Declaration- 3 Copies
9. Nil List (If there are no Passengers, Stowaways, Animals, Arms, Ammunitions)- 3 copies
10. List of Narcotic Medicines- 3 Copies
11. Crew List (Name, Rank, nationality, Passport Number, Seamen book number, Date of and Place, Place of Embarkation)- 7 Copies
12. Following Statutory Certificates- 2 Copies Each
13. Ship Registry Certificate,
14. ISPS Certificate
15. International Load Line Certificate
16. Cargo Ship Safety Equipment Certificate
17. Cargo Ship Radio Certificate
18. Cargo Ship Safety Construction Certificate
19. International Oil Pollution Certificate
20. Ship Sanitation Control Exemption Certificate

Reviewed By: Capt. Alok Priyadarshi	Issue No: 00	Revision No: 02
Approved By: Capt. Girish Chandra	Issued on: 03 Aug 2025	

E. Immigration Authority -

Custom Authority clears the vessel on behalf of Immigration Authority. Crew change if only Indian nationals are permitted. In case of emergency for foreign nationals, decision is taken on case-to-case basis by Authority. Ship's Agent will have to get landing permission from the local police.

Documents required in case of Crew Change (Only Indian national)

1. Crew List – 1 Copy
2. Personal Effects Declaration- 1 Copy
3. Sign/Sign off crew passport- 1 Copy

F. Please note that **"CONDITION OF USE" letter is a legal document and is to be filled up, signed, stamped and delivered to the Pilot without any remarks before commencement of Pilotage.**

G. Quarantine-

At Dahej Port, the customs-boarding officer usually gives quarantine (Free Pratique) clearance. However, if the vessel is coming from Yellow Fever area, Port Health Officer from Kandla Port will board the vessel. Vessel to inform whether vessel has visited any yellow fever affected area in the last one month.

Following set of documents is required:

1. Crew List- 1 Copy
2. Maritime Declaration of Health- 1 Copy
3. Vaccination List- 1 Copy
4. Ship Sanitation Control Exemption Certificate - 1 Copy

H. Port Security Details-

Current Security Level of AP(D)PL Port "Security Level-1"

Details of PFSO & Dy. PFSO:

Capt. Girish Chandra

Head-Marine & Port Facility Security Officer (PFSO)

Phone: +912641 – 2851020 (O)

MOBILE: +91-6357231712

Email: Girish.chandra2@adani.com

Capt. Rituraj Singh

Dy. PFSO

Phone: +912641 – 2851091 (O)

MOBILE: +91-9099984380

E-mail: Rituraj.Singh@adani.com

Reviewed By: Capt. Alok Priyadarshi	Issue No: 00	Revision No: 02
Approved By: Capt. Girish Chandra	Issued on: 03 Aug 2025	

REPORTING

ISSUES/OPERATIONS TO BE REPORTED

Issues to be reported	To	Via
Bunkering Operation start/stop	Adani Port Control	VHF Ch 73
Oil Spill	Adani Port Control	VHF Ch 73
Collision/grounding/fire/serious injury/MOB	Adani Port Control	VHF Ch 73
Losing of anchor or chain	Adani Port Control	VHF Ch 73
Entering/leaving port limit	Adani Port Control	VHF Ch 73
Anchoring inside port limit	Adani Port Control / VTS	VHF Ch 73/ VHF Ch 10
Anchoring outside port limit	VTS	VHF Ch 10
Collision or in any way out of control or in situation that may endanger the safety of shipping	Adani Port Control	VHF Ch 73
Under water inspection /diving	N/A	N/A
Lowering of lifeboats / Rescue boat	N/A	N/A
Robbery/Theft in Port Limit	Adani Port Control	VHF Ch 73
Sighting of suspicious craft/boat	Adani Port Control	VHF Ch 73
Any other activity or incident that vessel Wish to report	Adani Port Control	VHF Ch 73

Reviewed By: Capt. Alok Priyadarshi	Issue No: 00	Revision No: 02
Approved By: Capt. Girish Chandra	Issued on: 03 Aug 2025	

Part III

Port Description and Navigation

Reviewed By: Capt. Alok Priyadarshi	Issue No: 00	Revision No: 02
Approved By: Capt. Girish Chandra	Issued on: 03 Aug 2025	

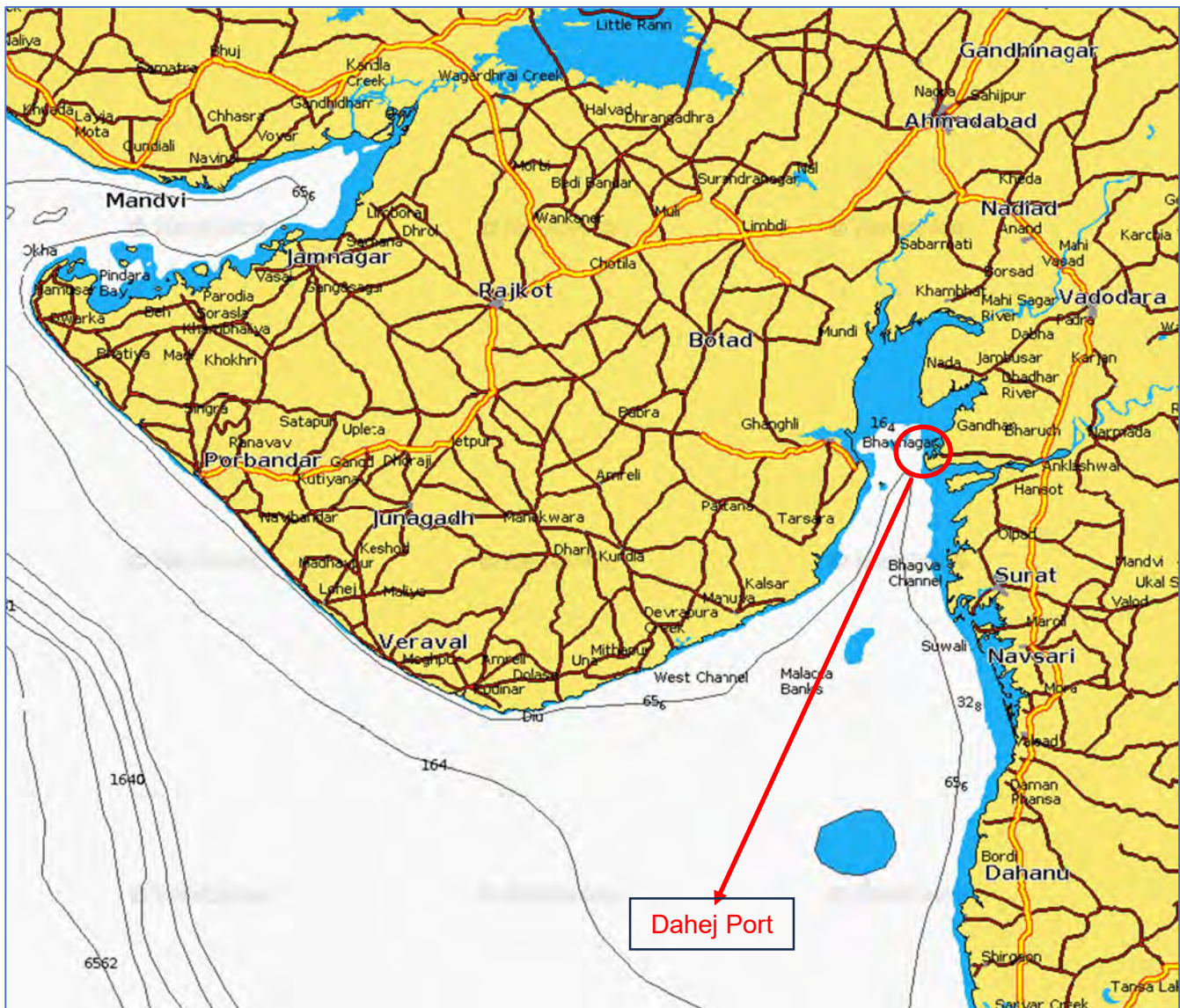
PORT DESCRIPTION

PORT LOCATION & DETAILS

Adani Petronet (Dahej) Port Limited (AP(D)PL), is a joint venture between Adani Group & Petronet LNG Limited. Strategically located in the gulf of Khambhat thereby having access to dense industrial areas of Gujarat and Maharashtra (North) & central M.P. Only commercial terminal in GMB port of Dahej handling bulk, break bulk and project cargoes.

AP(D)PL is all weather port, independent, commercial port with geographical and hydrological advantages on the West Coast of India, in the Gulf of Khambhat. The port offers services benchmarked to international standards.

Position : Latitude **21° 41.00'N**, Longitude **072° 30.57' E**



Reviewed By: Capt. Alok Priyadarshi	Issue No: 00	Revision No: 02
Approved By: Capt. Girish Chandra	Issued on: 03 Aug 2025	

PORT LIMITS

Dahej Port limit is bounded by the following points-

Point A:	21° 44' 30" N	072° 32' 20" E
Point B:	21° 44' 30" N	072° 28' 70" E
Point C:	21° 35' 00" N	072° 28' 70" E
Point D:	21° 35' 00" N	072° 32' 60" E

LOAD LINES

Vessels in AP(D)PL to comply with International Load Line regulations.

MAXIMUM SIZE VESSELS

Please see below restrictions on size of vessel in different aspects of the port-

- Max. draft- 14.0 m for vessels smaller than Capsize and 12.5 m for Capsize vessel
- Max. length- 300 m
- Max. displacement- 106667 MT (higher displacement upto 150000 Mt on case-to-case basis)

TIME ZONE

Local Time : GMT + 5.5 hr

LOCAL HOLIDAYS

Please see port website for local holiday list.

WORKING HOURS

The Port works 24 hours x 7 days in a week.

TRAFFIC

Most of the time of year both berths are occupied, other vessels wait for their turn at OPL anchorage.

Reviewed By: Capt. Alok Priyadarshi	Issue No: 00	Revision No: 02
Approved By: Capt. Girish Chandra	Issued on: 03 Aug 2025	

CARGO

AP(D)PL is handling good amount of cargo, and it has been increased in past few years. For more information, please refer port website www.adaniports.com

CHARTS AND PUBLICATIONS

Navigational Charts : Vessels visiting the Port must have on board a sufficient range of current Hydrographic Charts relevant to the Area. These charts must be kept up to date with regards to Notices to Mariners and other Notices issued for the area. As per statutory requirement by Government of India, vessel must carry Indian charts while entering Gujarat coast.

Indian Hydrographic Office Charts:	292, 254, 207, 208, 209, 210, 2044, 2039, 2082 & 2110.
British Admiralty Charts:	2736, 1474, 1487, 1486, 3460.

Navigational Publications : ALRS Vol 6

SHIPPING ANNOUNCEMENT FOR THE PORT AREA

Shipping announcement can be found in **Dahej Port Trade Notice**, which can be downloaded from **Adani Port Website-** <https://www.adaniports.com/Downloads>

PILOT STATION & PILOT PICK UP

AP(D)PL pilot boarding ground is -

1.25 NM west of terminal i.e. LAT- 021°41.0' N, LON- 072°29.5' E.

General Tide direction is 176° (flood)/ 356° (Ebb) with strength up to 5-6 kts. Vessel Master to keep the same in mind and avoid drifting N-S from PBG as per tide. For flood tide ensure turning is executed well in time.

Pilot boards with the tug and vessel is required to keep pilot ladder rigged on both (Port & Stbd) sides. It is essential that the Master and Officers are called on bridge for pre-berthing meeting by Pilot immediately after boarding. ***Refer Annexure VI for above.***

Adani Port / Marine control will guide the vessel inside port limit for approach to pilot station.

Following must be noted:

- Vessel to keep 2.ONM clear of the PLL during approach.**
- Incorrect pilot transfer arrangements (as per international & port requirements) lead to penalties as imposed by port/ terminal and Pilot boarding may be denied until deficiency is rectified.**

Reviewed By: Capt. Alok Priyadarshi	Issue No: 00	Revision No: 02
Approved By: Capt. Girish Chandra	Issued on: 03 Aug 2025	

PORT INFRASTRUCTURE

Vessels may have to wait at anchorage if berth is not available and await further instructions. Anchor positions are provided by the Gulf of Khambhat VTMS. Dahej marine environment is challenging because of its large tidal variation and very strong tidal currents. Due to this in past vessels have lost their anchors hence, for the safety of deep draft loaded vessels, Gulf of Khambhat VTMS is advising vessels to anchor at outer port limit (OPL) which is about 90 NM / 12 hr from the Dahej port limits. As per your charter party you may have the option of waiting at outer port limits where tidal stream is much less, most of the coal vessels calling Adani Dahej Port have Dahej clause & vessels are waiting at OPL anchorage.

Outer Anchorage Area (OPL):

OPL anchorage area is bound by following co-ordinates. Kindly confirm the same with VTMS Khambhat.

1. 20° 35.10' N 071° 21.35' E
2. 20° 35.10' N 071° 33.33' E
3. 20° 30.10' N 071° 21.35' E
4. 20° 30.10' N 071° 33.33' E

If berth is not available and vessel has to wait for the berth, she should follow the VTMS instructions and anchor as guided by the VTMS and tender NOR. Vessels to follow below for NOR tendering-

1. If Pilot boards the vessel on arrival, then the Pilot boarding time will be considered as the NOR time.
2. If vessel does not get Pilot on arrival and the vessel drops anchor then,
 - a) Inside the Port Limit: the anchor dropped time will be considered as NOR time.
 - b) Outside Port limit: the anchor dropped time will be considered as 1st NOR time & POB time will be considered as 2nd NOR time.
3. In case a vessel drops anchor in the port anchorage area but does not file Inward Pilot request then the time of filing the inward pilot request will be considered as NOR time.

As and when berth is available, port will provide 12 hr notice to the vessel to reach Dahej POB. All time duration for shifting from anchor aweigh time till POB time will not be counted as lay-time or time on demurrage.

Inner Anchorage Area near AP(D)PL:

AP(D)PL doesn't have any designated anchorage inside port limit or near terminal outside port limit. In case of any special circumstances VTIS Khambhat provide anchorage point off Port Limit on case-to-case basis.

Reviewed By: Capt. Alok Priyadarshi	Issue No: 00	Revision No: 02
Approved By: Capt. Girish Chandra	Issued on: 03 Aug 2025	

Fenders:

Berth	North berth	South Berth
Type	Pneumatic Yokohama type fenders	
Number of Fenders	9	9
Interval (Max)	24 m	24 m
Size	6.5 X 4.5 m	6.5 X 4.5 m

PORT ACCOMMODATION AND BERTH

AP(D)PL consists of two bulk- break bulk berths of 270 m each. The working area of North berth is 206 m and South berth is 222 m respectively.

North berth (NB) is fully mechanized berth with conveyor for handling coal cargo high evacuation rate of 4200 MT/Hr. South berth is non-mechanized berth for handling all other cargoes.

Main jetty load density is 4.5 MT/m² and load per axle is 13.5 MT.

IALA Directions:

The general directions, rules and regulations pertaining to safety of navigation are in accordance with the International Regulations for Prevention of Collisions at Sea 1972 and The IALA Buoyage System – Region A.

WEATHER AND TIDAL INFORMATION

Weather:

The wind speed during monsoon period is normally between 15kts to 30kts and wind direction Westerly to SW'ly. The wind speed during non-monsoon is normally 5kts to 15kts and wind direction NE'ly. A heavy swell may be encountered during the monsoon season from May to September.

Tidal Information:

Mean Sea level =	+5.1 m CD	MHWN =	+7.1 m CD
MHWS =	+8.8 m CD	MLWN =	+1.8 m CD
MLWS =	+0.9 m CD	LLWS =	-0.2 m CD
HHWS =	+10.8 m CD	HLWN =	+3.8 m CD
LHWN =	+6.4 m CD		

The mean tidal range at Dahej during the spring tide is 8.0 m and this goes up to 11 m also during Spring tide, therefore tidal currents at the berth may go as high as 6.0 kts. The tidal currents run parallel to the berth (356°-176°, Northerly during flood and southerly during the ebb tide).

Reviewed By: Capt. Alok Priyadarshi	Issue No: 00	Revision No: 02
Approved By: Capt. Girish Chandra	Issued on: 03 Aug 2025	

Therefore, it is advised: -

1. Moorings to be tended at frequent intervals due to high range of tide. The rise and fall of tide can be 0.5 m every 10 min. Vessel's crew must monitor moorings continuously and lines at both the stations to be tended simultaneously to keep vessel resting on all the fenders at all times. If vessel moves out of the fender Adani Port / Marine Control to be contacted on VHF Ch 73 requesting pilot and tugs assistance. Cargo operations must be stopped if the vessel moves out of the fenders.
2. Main Engine to be kept on stand-by during her stay at Berth.
3. Vessel to take ballast after about 50% of her cargo discharge.

Water density:

Water density varies from 1.012 to 1.021 during the Southwest Monsoon period.
Water density varies between 1.016 to 1.023 during the remaining part of the year.

WEBCAM

All Berths and Port Area is under continuous CCTV surveillance and monitored from Central Security Control Room.

Reviewed By: Capt. Alok Priyadarshi	Issue No: 00	Revision No: 02
Approved By: Capt. Girish Chandra	Issued on: 03 Aug 2025	

PORT NAVIGATION

SPEED



Reviewed By: Capt. Alok Priyadarshi	Issue No: 00	Revision No: 02
Approved By: Capt. Girish Chandra	Issued on: 03 Aug 2025	

The above is for guidance only.

Vessel, approaching to Pilot boarding ground, should have minimum safe speed and vessel to hold on to its position at PBG. Vessels are advised not to cross north of PBG. Adani Port / Marine Control directives are to be strictly followed. Excessive speed may result in vessel drifting along with tide.

Please note that the tidal current in the area is very strong. The current strength is about 5 to 6 knots and sets in the direction 356° in ebb tide and 176° in flood tide. Vessels are advised to exercise caution.

UKC

A Minimum under keel clearance of "15 % of the ship's max static draft or 0.5 m (whichever is higher)" will be maintained at the all-time of berthing.

While alongside berth minimum clearance of 50 cm is maintained.

RIGHT OF THE WAY

The outbound vessel will have priority Right of the Way. Any changes will be communicated by Adani Port / Marine Control on CH-73. Passing sides between the vessels will be communicated to inbound vessel by outbound vessel pilot.

MIN CPA OF VESSELS

Under Way vessels in port limit has to maintain

Without Pilot on-board: minimum 1 NM distance with another vessel

When Pilot on-board: As per pilot's discretion

Vessel to avoid being in north-south axis with other vessels within the port limit.

PASSING ARRANGEMENT

Vessel to cross each other in accordance with the COLREG 1972 (as amended). Marine communications between passing vessels to be established on VHF CH 73 / VHF Ch 69 (within the port limit).

RESTRICTIONS

- **Visibility:** Berthing/unberthing activity is suspended if visibility falls below 1000 meter.
- While maneuvering in Port Limit, Vessel to **maintain clearance of 2 Nm from LNG terminal.**

Reviewed By: Capt. Alok Priyadarshi	Issue No: 00	Revision No: 02
Approved By: Capt. Girish Chandra	Issued on: 03 Aug 2025	

INWARD AND OUTBOUND VESSELS

Vessel to cross each other in accordance with the COLREG 1972 (as amended). Marine communications between passing vessels to be established on VHF CH 73 / VHF Ch 69 (within the port limit).

SHIFTING VESSELS

Shifting of vessel, if required by the situation, will be always done under pilotage. Shifting might be berth to berth, berth to anchorage, anchorage to berth (as the case may be).

DOCKING

Pilotage is compulsory for berthing/unberthing/shifting/warping of vessels at AP(D)PL Dahej.

DISPLAY OF SIGNALS AND LIGHTS

All vessels in port limit are required to display lights and signal in accordance with International Rules of Road.

Reviewed By: Capt. Alok Priyadarshi	Issue No: 00	Revision No: 02
Approved By: Capt. Girish Chandra	Issued on: 03 Aug 2025	

Part IV

Port Safety and Security

Reviewed By: Capt. Alok Priyadarshi	Issue No: 00	Revision No: 02
Approved By: Capt. Girish Chandra	Issued on: 03 Aug 2025	

PORT SAFETY

The port complies with **ISO 9001:2015**, **ISO 14001:2015** and **ISO 50001:2018** standards. In addition to the above, the Port also has valid NSPC and ISPS Certification from Govt. of India.

The services, facilities and assistance provided by the AP(D)PL to vessels is subject to the following stipulations being complied with. The Masters of vessels in port are advised to take serious note of contents of this circular to avoid punitive action.

1. Vessel should arrive AP(D)PL with positive trim and no list. In no case should the vessel be trimmed down by the head or have a list of more than 0.2°. In case a vessel is found to be trimmed down by head or has a list of more than 0.2°, draft survey will not be conducted till she comes on even keel and uprights herself. All delay, detention and cost arising because of the same will be on vessel's account.
2. Vessels alongside must moor with the mooring plan as discussed/ agreed with. Do not use wire and fiber ropes in the same direction.
3. In the interest of safety of the berths and vessels, please ensure that moorings are always tight. The vessel must rest fully alongside all fenders within the parallel body length. Since the currents are strong and the tidal range is large, the vessel will come out of the berth if the mooring lines are not properly tended to. **Non-compliance may result in stoppage of cargo operations; all time lost and incidental expenses will be on vessel's account.**
4. No repairs or maintenance is to be carried out on the main engine or any other machinery which is essential for vacating the berth at short notice.
5. Hot work is normally not permitted on the berth. If Hot-Work permission is granted for any unavoidable work, the work will be carried out under attendance of the port's Fire & Safety unit, subject to payment of specified charges.
6. Smoking and naked lights are not permitted on vessel's decks or on the berths.
7. An efficient & continuous mooring and gangway watch under a responsible officer must always be maintained when at berth.
8. All working areas, decks and access points and gangway must be properly illuminated during hours of darkness.
9. Radio transmissions (MF & HF), under - water activity or small craft alongside the vessel are strictly prohibited.
10. Vessel must always listen to VHF Ch 73 for communication with Adani Port / Marine Control for all kinds of reporting.
11. **Every vessel must have on board, sufficient number of responsible officers and crew to deal with emergency situations, at all times.**
12. **All equipment's related to the vessel's Safety Fire Fighting as well as Pollution Prevention and control equipment, appliances and devices must be always in a state of efficient readiness and be readily available and accessible.**

Reviewed By: Capt. Alok Priyadarshi	Issue No: 00	Revision No: 02
Approved By: Capt. Girish Chandra	Issued on: 03 Aug 2025	

EMERGENCY CONTACT

Any Emergency, Incidents or accidents onboard is to be reported to Adani Port / Marine Control (primary) and/or Port Operations Centre (backup), as required, on the designated contact information as per below-

Adani Port / Marine Control:

Call Sign : Adani Port Control
Mobile : +91-9687695730
Phone : +91-2641-285030
Email : marinecontrol.dahej@adani.com
VHF Channel : 16 & 73 (about 3-4 hr before arrival)

Port Operation Centre (POC):

Mobile : +91-6358910530, +91-7228939423
Phone : +91-2641-285049
Email : portopscenter.dahej@adani.com

Details to be reported: Name of the Ship, Name of the Berth, nature of Emergency.

EMERGENCY RESPONSE EQUIPMENT (FIRE FIGHTING EQUIPMENTS)

Fire-fighting facilities available at AP(D)PL Dahej Port-

Fixed Firefighting System (Hydrants, monitor, water spray, foam purer) with pressurized water supply at jetty-

Location	Hydrant	Water Monitor	Foam Monitor	Water Spray System	Foam Purer System
North Berth	3	2	0	0	0
South Berth	4	2	0	0	0
Total	137	67	NIL	NIL	NIL

Details of Fixed and Mobile Firefighting system-

Fire Fighting System	Details
Fire Hydrant	137
Fire Monitor	67
Risers	17

Reviewed By: Capt. Alok Priyadarshi	Issue No: 00	Revision No: 02
Approved By: Capt. Girish Chandra	Issued on: 03 Aug 2025	

Total Fire Extinguishers	453
Fire Hose Boxes	180
Isolation Valves	50
SCBA set	12 set with 5 spare cylinders
Smoke Detector	325
Fire Bucket	90
Emergency Siren	5
Port Water Reservoir Pump House	Total Water Capacity- 4630kl 3 No. jockey pump- 15 m ³ /hr 4 No. electrical pump- 273 m ³ /hr 1 No diesel pump- 273 m ³ /hr
Silo Water Reservoir Pump House	5330 kl UG-1865, AG-2835, FFS- 630
Fire Vehicles Details	
Multipurpose Fire Tender- Water & Foam	10 kl & 1.5 kl
Dry Chemical Powder @ 50 Kg (MFT)	2
CO ₂ @ 4.5 Kg (MFT)	2
Fire Tender (1 No.)	12
Fire Water Bowser (1 No.)	7.5 kl
Trailer Pump (1 No.)	1800 LPM
Resue Devices	8

POLLUTION & OIL SPILL EQUIPMENT

Pollution

- It is an offence to discharge or allow escape, willfully or accidentally, any oil, oily mixture, oily/dirty ballast or contaminated bilge water or noxious sewage from any vessel within Dahej Port limits. International and Indian Laws stipulate heavy penalties including arrest, on the offending vessel and crew.
- Replenishment of bunkers, whether from sea or shore, will be permitted only on special application, monitored by the port's Marine/ Safety personnel, and shall be carried out in daylight hours only.
- Inter tank transfers of oil or ballast water, de-ballasting or discharge overboard of wash water etc. should not be carried out without permission of Adani Port / Marine Control
- Emission of dense smoke is prohibited from vessels within Port limits. Violations of stipulations under current Indian laws will incur heavy penalties.
- It is an offence to throw or dump galley refuse, garbage, and rubbish, hold sweepings etc. into the water or on the berths. Offending vessel is liable to large fines. No chipping or painting to be carried out alongside berth.
- Garbage disposal is facilitated via local agency to approved reception facility.

Reviewed By: Capt. Alok Priyadarshi	Issue No: 00	Revision No: 02
Approved By: Capt. Girish Chandra	Issued on: 03 Aug 2025	

Oil Spill Equipment

AP(D)PL is equipped to handle Oil Spill up to Tier-1. See below for list of equipment available-

Item	Quantity	Status
1500 mm Air Inflatable boom on reel with accessories	500 m	Operational
750 mm Foam filled boom (Cylindrical) with accessories.	500 m	Operational
20 TPH Multi Skimmers system with pumps & power packs	04 set	Operational
OSD Spray System / OSD Applicator	02 set	Operational
OSD (NIO & CG Approved) Type 2 &3- Kept in Birla Copper	5000 L	Within Expiry
Absorbent Boom	200 m	Operational
Absorbent Pad	1000 No.	Operational

EMERGENCY CO-ORDINATION CENTRE

The emergency coordination Centre for any kind of emergency in AP(D)PL is **Adani Port /Marine Control** VHF CHANNEL -73 and Backup for the same is **Port Operation Centre**.

EMERGENCY SCENARIOS

- Every vessel must have onboard, always, a sufficient number of responsible officers and crew to deal with emergency situations.
- Vessel's Safety, Fire - Fighting as well as Pollution Prevention and control equipment, appliances and essential devices must be always in a state of readiness and be available and accessible for immediate use.
- Safe access to the vessel must be always made available.
- Any fire mishap, accident, or case of pollution on / by or near a vessel in Port must be notified immediately to **Adani Port / Marine Control** on VHF CH. 73 (Primary) or to **Port Operations Centre (POC)** on designated number (secondary) of Dahej port, and by sounding appropriate alarm signals. Port's Marine / Safety personnel will attend the vessel and initiate shore emergency response to deal with the emergency.

EMERGENCIES

- **PERSONNEL INJURIES, CARGO RELATED INJURIES, EVACUATION OF SICK AND INJURED PERSONNEL**
 1. Provide first aid to injured personnel.
 2. In case of serious injury, inform **Adani Port / Marine Control** and/or **POC** via designated method and transfer the injured personnel ashore for further medical attention.
- **FIRE ONBOARD**
 1. Stop cargo discharging.
 2. Inform **Adani Port / Marine Control** and/or **POC** via designated method.
 3. Initiate on board fire emergency plan.

Reviewed By: Capt. Alok Priyadarshi	Issue No: 00	Revision No: 02
Approved By: Capt. Girish Chandra	Issued on: 03 Aug 2025	

- **SECURITY BREACH**
 1. Stop cargo operations.
 2. Inform **Adani Port / Marine Control** and/or **POC** via designated method.
 3. Initiate actions as per SSP.

- **TERRORIST ONBOARD VESSEL**
 1. Initiate actions as per SSP.
 2. Inform Port Control on VHF channel 73.

- **GROUNDING OF SHIP**
 1. Inform **Adani Port / Marine Control** and/or **POC** via designated method.
 2. Initiate on board emergency action plan for grounding as per onboard check list

- **COLLISION**
 1. Inform **Adani Port / Marine Control** and/or **POC** via designated method.
 2. Initiate on board emergency action plan for collision as per onboard check list.
 3. If Oil Spill, inform Port Control and initiate on board emergency action plan for Oil Spill as per onboard check list.
 4. If any injury to ship's crew, provide first aid to injured personnel. In case of serious injury to personnel, inform Port Control on VHF Channel 73 and transfer the injured personnel ashore for further medical attention.
 5. If there is DANGER to VESSEL'S SAFETY, then it is to be ANCHORED in safe water, so that she does not pose any threat to the port's water.

- **BAD WEATHER / CYCLONE**
 1. Vessel at berth to double up mooring lines and always keep them tight.
 2. Vessels at anchor to pay out sufficient length of chain into water and keep good anchor watch.
 3. Vessels to keep watch on VHF channel 73.
 4. In case of persistent wind speed >30 kts, vessel at berth may be unmoored to stay out of Port Limit.

- **MAN OVERBOARD / FALLEN FROM JETTY INTO SEA**
 1. Inform **Adani Port / Marine Control** and/or **POC** via designated method.
 2. Person on site to throw Life buoy and should NOT LOOSE SIGHT of the person fallen overboard.
 3. Initiate on board emergency action plan for MOB as per onboard check list.

- **OIL SPILL**
 1. Inform **Adani Port / Marine Control** and/or **POC** via designated method.
 2. Initiate on board Oil spill contingency plan as per onboard check list.

Reviewed By: Capt. Alok Priyadarshi	Issue No: 00	Revision No: 02
Approved By: Capt. Girish Chandra	Issued on: 03 Aug 2025	

PROHIBITION ON USE OF THURAYA & IRIDIUM SATTELITE PHONES

Circular no: APSEZ/07/2015

September 4th 2015

To,
Shipping Agents,
MP5AA- Gandhidham / Mundra.

Trade Notice No.07/2015: Usage of 'Thuraya, Iridium' and other such Satellite based Communication set in Indian Waters.

Dear Sir,

This has reference to DG Shipping circular no. 18NT(04)/2007/PT dated 6th Sept 2012 and Immigration office circular, Kandla dated 19 Sep 2012 on the subject. The use of Thuraya and Iridium satellite phone has been banned in Indian waters.

The port has been informed by the Police department that several ships continue to use using these satellite phones when in Indian waters. All agents are advised to inform ships coming under their agency to ensure strict compliance of the above mentioned circulars.

All vessels are henceforth required to provide the following details prior their arrival to Mundra along with Pre arrival Notification on Security (PANS).

1. Does the vessel have Thuraya / Iridium or any other such sets? : (Yes / No).
 - a. Date / Time / Location when the Thuraya/Iridium phone was last used:
 - b. Date / Time / Location when the Thuraya/Iridium phone will be switched off :
 - c. Phone no :
 - d. Model name and no :
 - e. Service Provider / Operator name :
 - f. IMEI no:
 - g. UID no :
2. All vessels are required to switch off their Thuraya / Iridium phones prior entering into the Indian Exclusive Economic Zone (EEZ) and keep it switched off till the vessel is out of the Indian EEZ.

The above requirement will come into force from 05th September 2015.

For Adani Ports and SEZ LTD.

Capt Sansar Chaube
GM-Marine Services
Cc: CEO desk

Adani Ports and Special Economic Zone Ltd
Adani House
P.O. Box 1
Mundra, Kutch 370 421
Gujarat, India

Tel +91 2838 25 5000
Fax +91 2838 25 5110
info@adani.com
www.adani.com

Registered Office: Adani House. Nr. Mithakhali Circle. Navrangpura. Ahmedabad 380 000. Gujrat. India

The Government of India vide **DG Shipping Circular No. 18NT(04)/2007/PT** (See above extract as screenshot of the same) dated 06th Sep 2012 have **banned use of Thuraya or Iridium satellite phones in Indian Waters.**

Reviewed By: Capt. Alok Priyadarshi	Issue No: 00	Revision No: 02
Approved By: Capt. Girish Chandra	Issued on: 03 Aug 2025	



ADANI PETRONET (DAHEJ) PORT LIMITED INTEGRATED MANAGEMENT SYSTEM FORMATS MANUAL

Vessels are required to provide declaration on presence of Thuraya and Iridium phones prior to arrival at Dahej Port along with Pre arrival Notification on Security (PANS). Vessels Masters are required to keep the Thuraya/Iridium Phones switch off prior entering Indian Exclusive Economic Zone (EEZ) and keep it switched off till the vessel is out of Indian EEZ.

Reviewed By: Capt. Alok Priyadarshi	Issue No: 00	Revision No: 02
Approved By: Capt. Girish Chandra	Issued on: 03 Aug 2025	

Part V

Nautical Services and Communication

Reviewed By: Capt. Alok Priyadarshi	Issue No: 00	Revision No: 02
Approved By: Capt. Girish Chandra	Issued on: 03 Aug 2025	

NAUTICAL SERVICES

VTMS SERVICES AT GULF OF KHAMBHAT

For entry and any guidance regarding navigation in Gulf of Khambhat, please contact VTMS Khambhat on VHF Ch. 10/69, on arrival within communication range of VTMS Hazira. VTMS also guides vessels regarding anchoring position. If anchoring, drop anchor as per VTMS instructions via email to Adani Port Control/ Port Operation Centre.

The vessel entering the Dahej Port limit for Adani Terminal must report to the Adani Port / Marine control on Ch-73 or 16.

PILOTAGE

Pilots are available 24 x 7. Pilots board vessels using tugboat having white accommodation and black hull. All Pilot Boats maintain a listening watch on VHF Ch – 73 at all times.

Pilotage within port limits is compulsory. No movements are to be undertaken without a licensed pilot on board and without express instructions from the Adani Port / Marine Control (VHF Ch.73). Tugs will be deployed for assistance in maneuvers at the sole discretion of the Pilot.

PILOT TRANSFER ARRANGEMENTS

Pilot ladders and other pilot transfer arrangements of all vessels, entering or departing Dahej Port shall be rigged in strict accordance with **regulation 23 of chapter 5 of SOLAS (Safety of Life at Sea) and IMO resolution A1045(27)**. Pilots normally board vessels from the Lee Side using one of the Tugboats. Adani Port / Marine Control will advise the "height of pilot ladder above the water", but in general should be 3.5 m above water line.

The Pilot Ladder should have tripping line attached so that it is not damaged when the tug comes alongside.

Vessels with freeboard more than or equal to 9 meters are required to rig Combination Ladder for Pilot Transfer.

Incorrect pilot transfer arrangements (as per international & port requirements) lead to penalties as imposed by port/ terminal and Pilot boarding may be denied until deficiencies are rectified.

TUGS

AP(D)PL has two tugboats, for all movement minimum 2 tugboats are compulsory. Additional tug will be taken for vessel with displacement > 110000 MT and/or depending on weather/tidal condition or any other circumstances.

Reviewed By: Capt. Alok Priyadarshi	Issue No: 00	Revision No: 02
Approved By: Capt. Girish Chandra	Issued on: 03 Aug 2025	

Tugs Details		
Name	Dolphin No. 6	Dolphin No. 8
CALL SIGN	AUOB	AUOA
OFFICIAL NUMBER	3263	3262
MMSI NUMBER	419069900	419072700
IMO NUMBER	9431666	9442782
BUILT AT	JAPAN	JAPAN
SHIPYARD	KANAGAWA SHIPYARD	KANAGAWA SHIPYARD
PORT OF REGISTRY	MUMBAI	MUMBAI
G.R.T.	347	347
N.R.T.	104	104
LENGTH OVERALL	33.62 m	33.62 m
REGISTERED LENGTH	31.32 m	31.32 m
BREADTH	9.60 m	9.60 m
MOULDED DEPTH	4.30 m	4.30 m
DRAFT (MAX.)	3.20 m	3.20 m
CLASSIFICATION SOCIETY	IRS	IRS
TYPE OF VESSEL	TUG	TUG
TYPE OF M.ENG.	6L28HX	6L28HX
MAKE	NIIGATA	NIIGATA
M.ENGINE	2 X 1618 KW @ 750 RPM	2 X 1618 KW @ 750 RPM
SPEED	12 KNOTS	12 KNOTS
MAIN GEN. ENG. MODEL	6HAL2-TN	6HAL2-TN
MAKE	YANMAR	YANMAR
MAIN GEN. ENGINE	2 X 180 HP @ 1500 RPM	2 X 180 HP @ 1500 RPM
ALTERNATOR (KVA)	2 X 150 KVA,445V,3PH, 50HZ	2 X 150 KVA,445V,3PH, 50HZ
H/G ENG. MAKE/MODEL	YANMAR/6CHL-N; 62HP @ 1500 RPM	YANMAR/6CHL-N; 62HP @ 1500 RPM
H/G ALTERNATOR	50 KVA	50 KVA
PROPULSION (MAKE)	Z-PELLER ZP-31	Z-PELLER ZP-31
BOLLARD PULL	55 MT	55 MT

MOORING

Mooring Arrangements

As per the port mooring requirements, the vessel must provide sufficient number of soft mooring ropes (4+3+ 3 or 4+2+2 F & A, depending on LOA). All the ropes to be tied by messenger ropes which are provided from shore during berthing.

All mooring ropes shall have tail rope as per international standard (1.8 – 2 m).

No wire ropes are acceptable for mooring the vessel.

Reviewed By: Capt. Alok Priyadarshi	Issue No: 00	Revision No: 02
Approved By: Capt. Girish Chandra	Issued on: 03 Aug 2025	

[Back to Index](#)

If vessels are short of mooring ropes, then port can provide the same on rent. All mooring lines are to be checked frequently and adjusted if required as the tide range is very high (up to 11 m). Vessel must keep a regular watch on Port working channel CH-73 during the entire stay including stay alongside berth.

Vessel equipment & mooring winches

Vessel Master to ensure that all navigational equipment, mooring winches and anchor windlasses are fully operational. Any shortcoming is to be reported to Port as soon as possible on or before arrival. It is advised that all mooring winches / break liners / mooring ropes are in good working condition. It has been observed that vessels on which mooring winches / mooring ropes were not in good condition sway out of berth during strong tidal stream.

Mooring Readiness Prior Berthing for Vessels Calling at Adani Dahej Port

- Forward and Aft mooring station crew to be standby when the ship is arriving at Pilot station.
- The tugs are made fast once the pilot boards the vessel.
- Vessel to keep messenger lines ready along with heaving lines to make fast the tugs lines which are heavy.
- Vessel to keep ready mooring line as per industry standards in number as below -
 - a. 10 lines Fwd. (4 Head + 3 Breast+ 3 spring) and 10 lines Aft (4 Stern lines + 3 Breast+ 3 spring) for LOA ≥ 170 m.
 - b. 8 lines Fwd. (4 Head + 2 Breast+ 2 spring) and 10 lines Aft (4 Stern lines + 2 Breast+ 2 spring) for LOA < 170 m.
- All lines will be passed ashore by heaving line / Messenger line.

Mooring line sequence

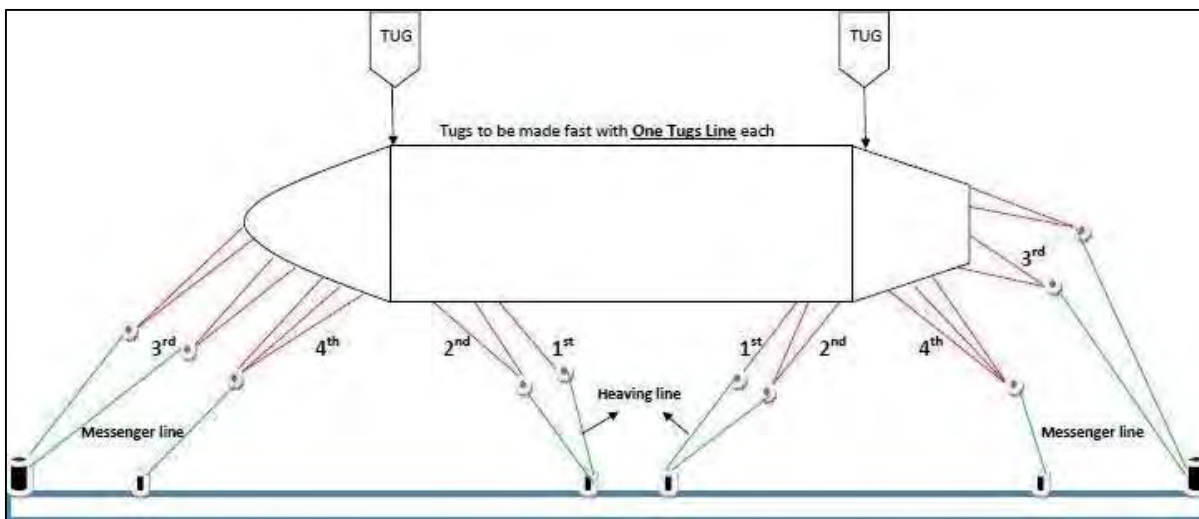
- Vessel to start mooring operation with a single spring line from both the forward and aft stations using the ship's heaving line.
- Once the vessel is in position and alongside the berth, another two spring lines can be sent one-by-one to shore using ship's heaving line.
- After that the vessel to receive shore messenger lines using the ship's heaving line.
- After that the head and stern lines (2+2) to be tied with two messenger lines each (fwd & aft) and shall be secured to the shore bollard/mooring hooks.
- All 3 breast lines are to be passed together with one messenger lines each (fwd & aft).
- Lastly, auto tension line from shore to be made fast on board.

Note- Master's call (in consultation with pilot) on mooring sequence and pattern will override the normal guidelines.

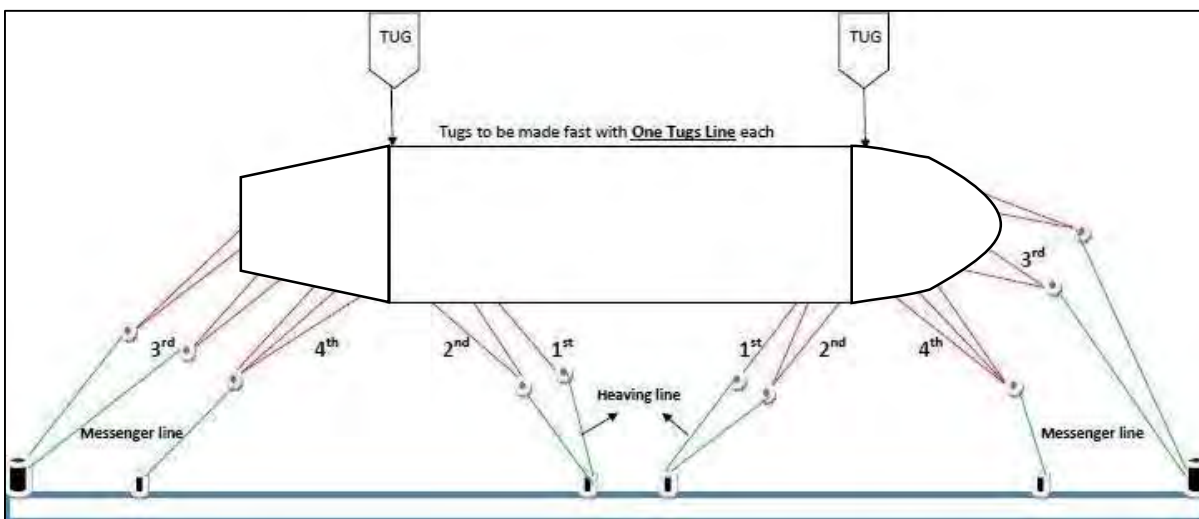
Reviewed By: Capt. Alok Priyadarshi	Issue No: 00	Revision No: 02
Approved By: Capt. Girish Chandra	Issued on: 03 Aug 2025	

Mooring Pattern-

Port side Alongside



Starboard side Alongside



Bollard Position subject to differ depending upon the type of vessel.

Auto tension line from shore

In addition to ship's mooring lines, port will provide one fwd and one aft auto tension rope from shore winch on a chargeable basis. Shore winch rope is compulsory as mentioned below-

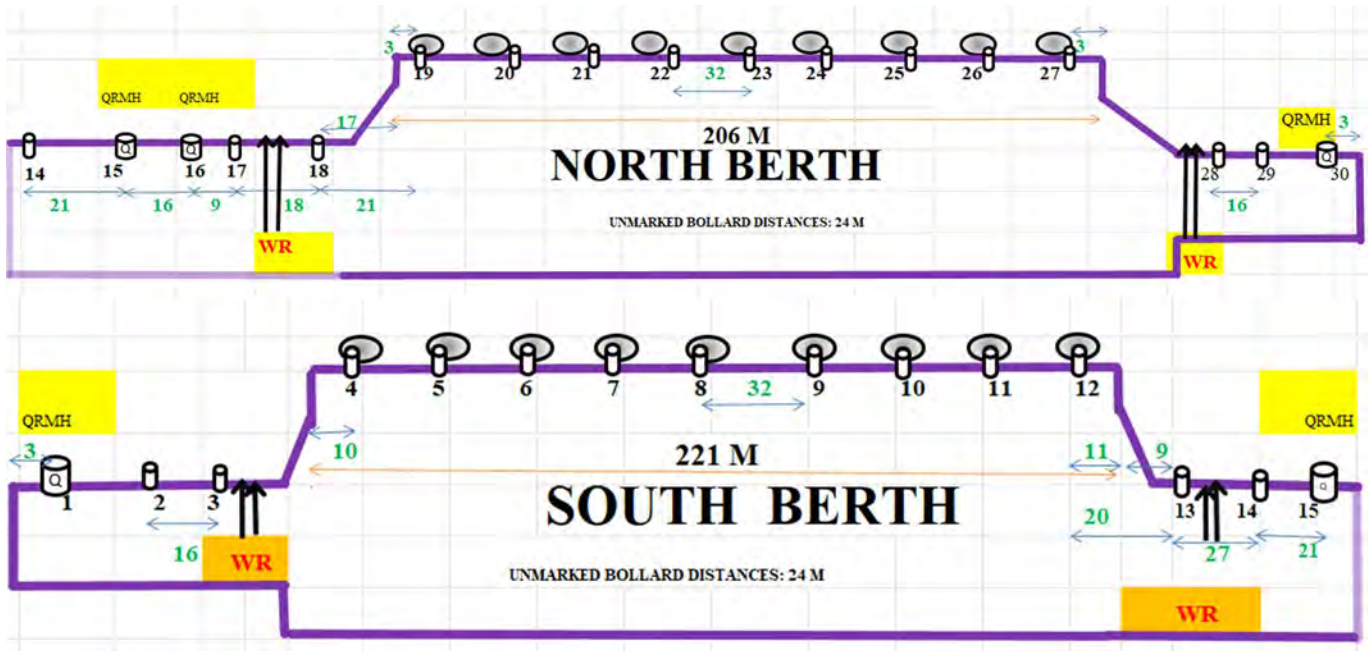
1. 15 Sep to 15 Mar- for first 24 hr
2. 15 Mar to 15 Sep- throughout vessel's stay

Throughout the stay for displacement > 110000 ton irrespective of the month.

Reviewed By: Capt. Alok Priyadarshi	Issue No: 00	Revision No: 02
Approved By: Capt. Girish Chandra	Issued on: 03 Aug 2025	

Bollard Spacing on jetty

Distance between two bollards is 24 m unless it is specified otherwise. The total length of jetty is 666 m. Please see the diagram below for reference-



From Bollard	To Bollard	Distance
1	2	24 m
2	3	16 m
3	4	24 m
4	5	24 m
5	6	24 m
6	7	24 m
7	8	24 m
8	9	32 m
9	10	24 m
10	11	24 m
11	12	24 m
12	13	20 m
13	14	27 m
14	15	21 m
15	16	16 m

From Bollard	To Bollard	Distance
16	17	09 m
17	18	18 m
18	19	21 m
19	20	24 m
20	21	24 m
21	22	24 m
22	23	32 m
23	24	24 m
24	25	24 m
25	26	24 m
26	27	24 m
27	28	24 m
28	29	16 m
29	30	24 m

Reviewed By: Capt. Alok Priyadarshi	Issue No: 00	Revision No: 02
Approved By: Capt. Girish Chandra	Issued on: 03 Aug 2025	

Shore Winch Details:

Mooring winch	
Make	Rolls Royce
Capacity	150 T
Type of Ropes	HMPE Rope
Diameter	44 mm (without cover)
SWL	30 T
Breaking Strength	150 T
Length	75 m

LASHING OF CARGO

N/A

Reviewed By: Capt. Alok Priyadarshi	Issue No: 00	Revision No: 02
Approved By: Capt. Girish Chandra	Issued on: 03 Aug 2025	

NAUTICAL COMMUNICATION

COMMUNICATION METHOD

Adani Port / Marine Control is the point of contact for all navigational matter, it continuously monitors VHF Ch. 16 and VHF Ch 73 (Port Working Channel). Call "Adani Port/ Marine Control" as per below-

Call Sign : **Adani Port Control**
Mobile : **+91-9687695730**
Phone : **+91-2641-285030**
Email : marinecontrol.dahej@adani.com
VHF Channel : **16 & 73 (about 3-4 hr before arrival)**

Reviewed By: Capt. Alok Priyadarshi	Issue No: 00	Revision No: 02
Approved By: Capt. Girish Chandra	Issued on: 03 Aug 2025	

Part VI

Port Operations

Reviewed By: Capt. Alok Priyadarshi	Issue No: 00	Revision No: 02
Approved By: Capt. Girish Chandra	Issued on: 03 Aug 2025	

CARGO OPERATION

AP(D)PL handles a Project Cargo and variety of Bulk Cargoes such as Coal, Fertilizer, Minerals, Ores, Steel coils, Gypsum etc.

LOADING/DISCHARGING PROCEDURES

The Master is responsible at all times for the safe loading & discharging of the ship cargo, details of which should be confirmed to the terminal in the form of a loading/discharging plan. In addition, the Master should ensure that the ship-shore safety checklist is completed in consultation with the terminal and signed before loading or unloading is commenced.

The Master and terminal manager, or their representatives, should complete the checklist jointly.

It is prohibited to transfer dangerous or noxious substances in AP(D)PL.

CARGO HANDLING

The Terminal Operators, M/s. AP(D)PL arrange all cargo handling activities in the port, including warehousing and storage, internal transportation and cargo loading/ unloading, round- the- clock.

GROUND HANDLING EQUIPMENT

Dumpers, Pay-loaders and stackers are used for quick transfer of cargo between storage area and berths.

COMPUTERISED WEIGH BRIDGES

- 60 Mt capacity : 1 No
- 80 Mt capacity : 5 No
- 100 Mt Capacity : 3 No

STORAGE CAPACITY

Sr. No.	Yard Name	Type	Area	Length	Breadth	Floor type
1	OSY 1 (Mech)	Mech	13650	390	35	Kaccha
2	OSY 2 (Mech)	Mech	13200	440	30	Kaccha
3	OSY 3 (Mech)	Mech	13200	440	30	Kaccha
4	OSY 4 (Mech)	Mech	13640	440	31	Kaccha
5	OSY 5 (Mech)	Mech	13640	440	31	Kaccha
6	OSY 6 (Mech)	Mech	10500	420	25	Kaccha
7	OSY 7 (Mech)	Mech	10675	305	35	Kaccha

Reviewed By: Capt. Alok Priyadarshi	Issue No: 00	Revision No: 02
Approved By: Capt. Girish Chandra	Issued on: 03 Aug 2025	

8	OSY 8 (Mech)	Mech	12710	410	31	Kaccha
9	OSY 9 (Mech)	Mech	12710	410	31	Kaccha
10	OSY 10 (Mech)	Mech	6500	260	25	Kaccha
11	OSY 11 (Non-Mech)	Non-mech	19825	305	65	Kaccha
	OSY 11 (Non-Mech, Concrete)	Non-mech	6500	100	65	Concrete
12	OSY 12 (Non-Mech, Concrete)	Non-mech	7975	145	55	Concrete
	OSY 12 (Non-Mech, Concrete)	Non-mech	11000	200	55	Concrete
13	OSY 13 (Non-Mech)	Non-mech	22800	380	60	Kaccha
	OSY 13 (Non-Mech)	Non-mech	6000	100	60	Kaccha
14	OSY 14 (Non-Mech)	Non-mech	15480	129	120	Kaccha
	OSY 14 (Non-Mech)	Non-mech	15480	129	120	Kaccha
15	OSY 15 (Non-Mech)	Non-mech	7260	330	22	Kaccha
16	OSY 16 (Non-Mech, Paver Block)	Non-mech	37050	285	130	Paver Block
17	ODC Gate	Non-mech	5500	70	75	Kaccha
18	CG 1	Non-mech	10800	180	60	Concrete
19	CG 3	Non-mech	4800	120	40	Concrete
20	CG 2	Non-mech	9000	150	60	Concrete

HARBOUR CRANES

North Berth - 2 Rail Mounted Liebherr make cranes (SWL – 75 MT each in hook mode).

South Berth - 2 Rail Mounted Gottwald make cranes (SWL – 80 MT each in hook mode).

EQUIPMENT: IMPORT CONVEYOR SYSTEM

- Conveyor Within Port: Length 6.27 km
- Conveyor Outside Port: Length 3.74 km (Total of 10.01 km)
- Capacity 4200/5600 TPH.
- Conveyor speed is 4.35 m/s.

EQUIPMENT: STACKER / RE-CLAIMER

Two number of Stacker cum Re-claimer with Capacity: 4200 TPH / 2500 TPH

CONVEYOR SYSTEM

Export conveyor and ship loader with a capacity of 4200 TPH at North Berth.

Reviewed By: Capt. Alok Priyadarshi	Issue No: 00	Revision No: 02
Approved By: Capt. Girish Chandra	Issued on: 03 Aug 2025	

CLEANING PROCEDURES

The holds of a Freighters or bulk carriers may always be cleaned, provided that the refuse or the cargo residues stay on board.

1. The vessel is not permitted to discharge hold wash water in the Gulf of Khambhat.
2. The vessel should retain the hold wash water in vessel tanks & there should be provision for transferring the hold wash water into the tank.
3. Port representative will board the vessel upon its re-berthing to verify the storage of hold wash water. Any breach of MARPOL regulation observed will be reported to Port State Control for their further action.
4. The master will have to demonstrate the tank transfer arrangement and safe containment of hold wash water retained on board.
5. The matter involves compliance with MARPOL and any deviation from the regulations is not permitted by MMD or DGS.

Reviewed By: Capt. Alok Priyadarshi	Issue No: 00	Revision No: 02
Approved By: Capt. Girish Chandra	Issued on: 03 Aug 2025	

VESSEL OPERATION

LOWERING OF LIFEBOATS / LIFERAFTS

Not permitted to make waterborne and maneuver. Only lowering above water level is allowed.

MAINTENANCE AND REPAIR

For any type of maintenance and repair facility prior permission must be taken from AP(D)PL and can only be done while drifting or at anchorage.

UNDERWATER INSPECTION/CLEANING

Not permitted.

RAZOR WIRE

Kindly note that the tug's tow line tends to get damaged due to the protrusion extending outside the ship side for fitting anti-piracy razor wires or other devices. The tugs are used not only for pushing and pulling but also for pulling back after being made fast to the ship's shoulder and quarter. The vessel's Master should keep the ship side clear from where the tug will be made fast on the shoulder and quarter so that no damage takes place to the tug's towing line. In case any damage takes place to the tugs towing line, the cost of replacing the tow line will be recovered from the vessel.

SOOT BLOWING

Soot blowing is prohibited in port limits.
The vessel should, if required, carry out soot blowing before arriving in port waters.

SEA TRIAL

Not permitted within port limit,

Reviewed By: Capt. Alok Priyadarshi	Issue No: 00	Revision No: 02
Approved By: Capt. Girish Chandra	Issued on: 03 Aug 2025	

PORT INSPECTIONS

INSPECTIONS FROM PORT STATE CONTROL, INSPECTIONS FROM OTHER PARTIES

The office of Port state control is located at Kandla 510 Km away from Dahej Port. The officials from Port State Control or from government agencies can board the vessel anytime for necessary inspection during her stay at AP(D)PL, as required.

Reviewed By: Capt. Alok Priyadarshi	Issue No: 00	Revision No: 02
Approved By: Capt. Girish Chandra	Issued on: 03 Aug 2025	

Part VII

Port Services

Reviewed By: Capt. Alok Priyadarshi	Issue No: 00	Revision No: 02
Approved By: Capt. Girish Chandra	Issued on: 03 Aug 2025	

PORT SERVICES

Services at AP(D)PL-

S.NO	SERVICES	DETAILS
1	Bunkers / stores	Can be arranged by Agents with sufficient notice after obtaining permissions from Statutory bodies.
2	Fresh water	Available on Requisition on chargeable basis.
3	Medical facility	Round the clock medical representative & Ambulance available in port.
4	Garbage/Sludge removal	Garbage/Sludge removal facility available on requisition (chargeable basis).
5	Custom / immigration	Office in Dahej
6	Airport	Vadodara (127 km) Daily flights to Delhi / Mumbai

Please go through BPTS for further details.

FUEL AND LUBRICATION OIL

Bunkers can be arranged by Agents with sufficient notice after obtaining permission from Port Operations Centre. Bunker facility available through tankers.

FRESH WATER

Fresh Water Supply facility is available at all berths on prior requisition to Port Operations Center through local agent on chargeable basis as per port tariff.

STORES

Ship store supply facility is available through registered ship chandlers only.

Deliveries of stores, supplies or equipment parts is allowed 24 x 7 using ship's crane or shore movable crane (on rent), which can be requested via local agent upon specific authorization by the PFSO/ Dy. PFSO.

SHORE BASED ELECTRICITY

Available only for Tugs and small crafts 440V, 50 Hz, 125 Amp.

Reviewed By: Capt. Alok Priyadarshi	Issue No: 00	Revision No: 02
Approved By: Capt. Girish Chandra	Issued on: 03 Aug 2025	

WASTE DISPOSAL

If a vessel intends to do waste disposal to Shore Reception Facilities, then same is to be preferably requested 24 hours or more prior arrival through "Swachh Sagar Portal". ANF number and disposal request to be sent to POC by email through local agent.

Collection of waste is permitted 24 x 7.

"Swachh Sagar Portal" of DG Shipping. <https://prf.swachhsagar-dgs.in/anf>

Waste Accepted

- Paper
- Plastic
- Food waste
- Glass Bottles
- Oily Rags
- Slop
- Sludge

REPAIR

All types of repair facilities are provided by approved workshop upon prior approval from Port Operation via local agent.

SHIP SANITATION INSPECTION

Not available

SURVEYORS

Vessels are advised to liaise with local agent for surveyor.

SHIPPING AGENTS

The offices of various steamer agencies are located at Dahej and Bharuch. A list of agencies is available with POC.

MEDICAL FACILITIES

An Occupation Health Centre with Ambulance service is available inside port premises. To avail medical services, if required, ambulance from port can be hired for transportation to Bharuch, Surat

Reviewed By: Capt. Alok Priyadarshi	Issue No: 00	Revision No: 02
Approved By: Capt. Girish Chandra	Issued on: 03 Aug 2025	

and Vadodara.

SEAMAN'S MISSIONS

Not available

TRANSPORT

The transport facility for any purpose will be arranged by local agents only.

SLUDGE REMOVAL

Sludge removal facility is available on prior requisition through local agents by registered contractors.

CUSTOM / IMMIGRATION

The Custom Authority has its office in Dahej and Immigration Authorities have theirs in Bharuch.

SHORE CRANE AND HYDRA

Shore Crane & Hydra service is available on prior requisition to POC through local agent.

TUG AND BOAT

Tug and Boat service is available on prior requisition to Port Operations Center through local agent.

AIRPORT

- Vadodara Airport (BDQ) is located 127 km from AP(D)PL.
- Surat International Airport (STV) is located 143 km from AP(D)PL.
- Ahmedabad International Airport (AMD) is located 230 km from AP(D)PL.
- Mumbai International Airport (BOM) is located 377 km from AP(D)PL.

NATIONALISED BANK IN PORT

Not available.

Reviewed By: Capt. Alok Priyadarshi	Issue No: 00	Revision No: 02
Approved By: Capt. Girish Chandra	Issued on: 03 Aug 2025	

TELEPHONE

Not available

DUTY FREE SHOPS

Not available

SECURITY PROCEDURE FOR VESSEL CREW TO VISIT SEAMAN'S SHOPPING CENTER

N/A

SHORE LEAVE

Not permitted.

SHORE GANGWAY

Shore Gangway is mandatory in ADPDL for both the berths. Due to the high tidal range at Dahej most of the time ship's Gangway is not possible hence port provide shore Gangway on the chargeable basis.

DAHEJ CHARTS CONVEYING BY BERTHING PILOT

As per statutory requirement by Government of India, vessel must carry Indian charts while entering Gujarat coast.

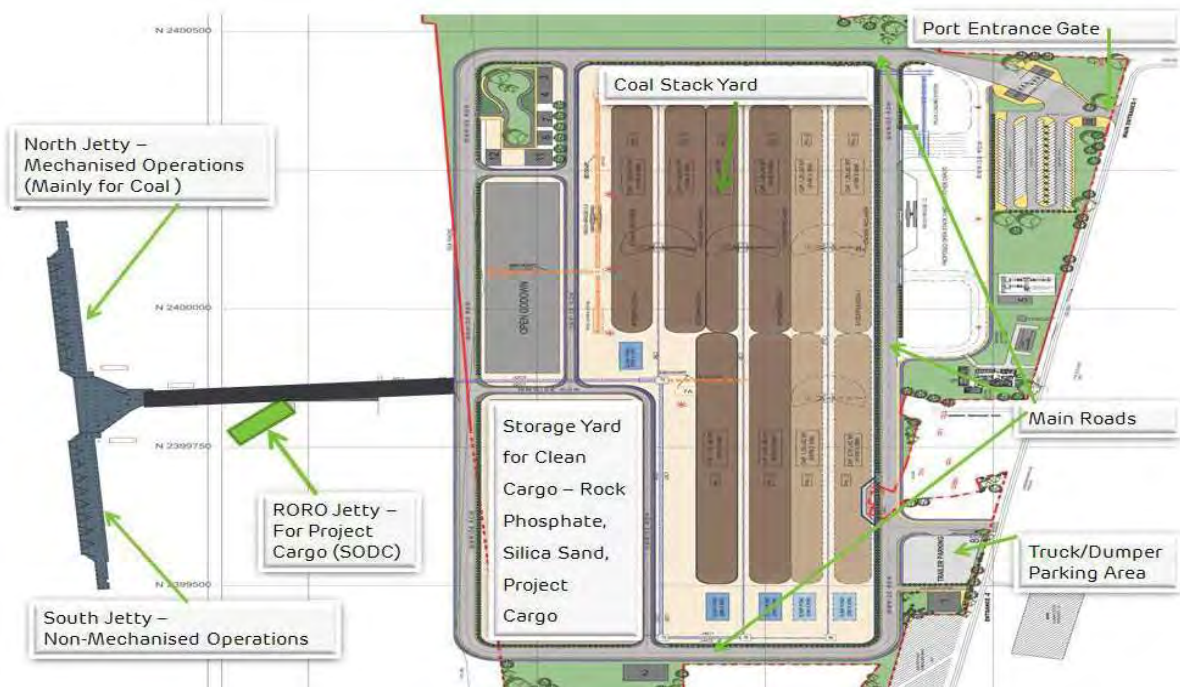
In case vessel does not carry navigational charts for Dahej, the vessel agent can arrange for the same and hand it over to the Port Operation Center. The berthing pilots will hand over the charts to the vessel master on boarding the vessel at no cost.

LIFERAFT & LIFEBOAT/RESCUE BOAT SERVICING

Facility can be availed via local agent.

Reviewed By: Capt. Alok Priyadarshi	Issue No: 00	Revision No: 02
Approved By: Capt. Girish Chandra	Issued on: 03 Aug 2025	

Annexure I: LAYOUT PLAN OF DAHEJ PORT



Reviewed By: Capt. Alok Priyadarshi	Issue No: 00	Revision No: 02
Approved By: Capt. Girish Chandra	Issued on: 03 Aug 2025	

Annexure II: PORT AND BERTH INFORMATION (at a glance)

Terminal Name	Adani Petronet (Dahej) Port Pvt Ltd.
Call Sign (for Radio Communication)	Adani Port Control
Berth Co-ordinates	LAT- 21°41.3' N
	LON- 072°31.27' E
PBG position	LAT- 21°41.0' N
	LON- 072°29.0' E
Total length of jetty	666 M

Details of Jetty	North Berth	South Berth
Length	232 m	232 m
Working length	206 m	222 m
Breadth	29.1 m	30.6 m
Load Bearing	4.5T/Sq. m	4.5T/Sq. m
Tug Berth	50.8183 m	50.81 m
Tug berth Width	12.92 m	12.92 m
Fender	Arch fender	Arch fender
No. of fire line hydrant valve	3+1	5+2
Spare ropes	5	5
Y Junction		
Length	100 m	
No. of hydrant valve at Y junction	2	
RORO BERTH		
Max Length	165.6 m	
Max Breadth	18.5 m	
Total no of bollards	06	
Number of Floating bollards (anchors on seaside)	02	
Ramp height from above bed level	2.0 m	
Seabed level at the ramp area	6.5 m above Chart Datum	
Ramp top above the Chart Datum is	8.5 m	
Jetty Bollard		
Length	1200 mm	
Width	1050 mm	
Height	1078 mm	
Total number	30	
Type	Twin horn	
Distance between Bollards	24 m	
Capacity	150 T	
Breaking strength of Jetty bollard	200 ton	

Reviewed By: Capt. Alok Priyadarshi	Issue No: 00	Revision No: 02
Approved By: Capt. Girish Chandra	Issued on: 03 Aug 2025	

Tug Berth Bollard	
North tug berth bollard	7
South tug berth bollard	7
Tug berth bollard height	610 mm
Distance between Bollards of tug berth	8 m
Jetty Top Height from Chart Datum	15.50 m
Mooring Ropes used for Jetty	
Type	X2
Diameter	64 mm
Length	110 m
SWL	13.2 ton-force
Breaking Strength	79000 kgf
Tug Ropes	
Diameter	96 mm
SWL	52 ton-force
Breaking Strength	185000 Kgf
Mooring winch	
Make	Rolls Royce
Capacity	150 T
Type of Ropes	HMPE Rope
Diameter	44 mm (without cover)
SWL	30 T
Breaking Strength	150 T
Length	75 m
Shore Gangway	
Quantity	3
Length	15 m
Width	600 mm
Maximum Currents at berth	
Surface	6.50 Kts
Mid	3.00 Kts
Bottom	1.80 Kts
Tides	
Mean Sea Level	5.10 m CD
MHWS	8.80 m CD
MLWS	0.90 m CD
MHWN	7.10 m CD
MLWN	1.80 m CD
HHWS	10.8 m CD
LLWS	-0.20 m CD
LHWN	6.40 m CD
HLWN	3.80 m CD

Reviewed By: Capt. Alok Priyadarshi	Issue No: 00	Revision No: 02
Approved By: Capt. Girish Chandra	Issued on: 03 Aug 2025	

Communication Channel	
APDPL (Adani)	VHF Ch 73
PLL (Petronet LNG)	VHF Ch 74
GCPL	VHF Ch 77
BIRLA COPPER	VHF Ch 67
VTS KHAMBHAT	VHF Ch 69
DIRECTION OF JETTY	176° ~ 356°
CURRENT FLOW DIRECTION	174° ~ 354°
Fenders	
Type	Pneumatic Yokohama type fenders
Size	6.5 X 4.5 m
Distance between fenders	24 m
Working Pressure	0.5 kg/cm ²
Hydro testing pressure	2.0 kg/cm ²
Safety valve pressure	1.5 kg/cm ²
Max. hull pressure	< 200 kn/m ²
Chain	20 mm
D Shackle 8.5 T Capacity	24 in number
D Shackle 5 T Capacity	48 in number
Bow Shackle 8.5T Capacity	48 in number
Chain length	200 m
Tyers	48 +24 (big + small) in number
Tyre Model	big-1020/90020, small-75016
Fender platform height	17 m
Fender platform width	08 m
Fender platform thickness	200 mm
Wire rope	55 mm
End hook	02 in number
Guy chain length	2.5 to 3.0 m
Approx. weight estimate:	
Frame/front panel	40 T
Beams/support	20 T
Clamps/hangers	8 T
Total weight	68 T

Reviewed By: Capt. Alok Priyadarshi	Issue No: 00	Revision No: 02
Approved By: Capt. Girish Chandra	Issued on: 03 Aug 2025	

Shore Crane	NORTH	SOUTH
Number	2	2
Make	Liebherr	GOTTWALD
Model	VSHC924	VSHC834S
Year	2009	2010
SWL	75 MT	80 MT
Max Outreach	50 m	50 m
Min. Outreach	12 m	12 m
Rail span	13 m	13 m
Length	25 m	24 m
Capacity	1500 T/hr	1500 T/hr
Grab volume	44 CBM	46 CBM
Grab weight	21 T	22 T
Hopper	North Berth	South Berth
Length	17 m	17 m
Rail span	13 m	13 m
CBM	125 m ³	90 m ³
Chute point	1830 mm	N/A
BELT SPEED	4.35 m/s	N/A
Conveyor belt width	1800 mm	N/A
Belt capacity	4200 TPH	N/A
Reclaiming capacity	2500 TPH	N/A

Reviewed By: Capt. Alok Priyadarshi	Issue No: 00	Revision No: 02
Approved By: Capt. Girish Chandra	Issued on: 03 Aug 2025	

Annexure III: CONDITION OF USE

CONDITION OF USE OF FACILITIES AND SERVICES AT DAHEJ PORT

The Chief Executive Officer,
Adani Petronet (Dahej) Port Limited (AP(D)PL), Dahej - Bharuch - Gujarat (India)

Dear Sirs,

I, **Capt** _____, Master ("**Master**") of M.V. _____ ("**Vessel**"), owned by _____ ("**Owner**") whose address is at _____ hereby acknowledge receipt of these Conditions of Use ("Conditions of Use") of _____ Port ("**Port**") and to avail the Port Facilities* and Port Services* as detailed hereunder and agree that:

- (a) The Master shall at all times and under all circumstances be responsible for the safe and proper operation, navigation and berthing of the Vessel at the Port operated by Adani Ports & Special Economic Zone Limited ("**Company**"). It is further agreed the Port Management shall not be responsible for delay in pilotage, berthing, ingress or egress, delay in cargo operation, etc., for any reasons whatsoever.
- (b) The Vessel shall abide by all rules, regulations, guidelines and recommendations with reference to prevention of pollution, including pollution due to bilges, ballast water, vessel waste, garbage and the like; in addition to any other laws, rules, regulations, or procedures, declared or issued by the Government of India, or the State of Gujarat, or by the Company ("**Port Management**").
- (c) The Vessel will be held responsible for any loss or damage caused to the Port property and all costs, charges and expenses in that behalf, which shall be paid on a demand being made, without any demur and shall be responsible for, indemnify and hold harmless the Company from and against all claims, losses, damages, delays, costs (including legal costs), expenses and liabilities of every nature.
- (d) The Port endeavors that the berths, its facilities, equipment's, tugs and crafts are deployed and operated safely, but does not guarantee any such safety. The Port shall not be responsible for any damage, delay or loss (including cargo loss) sustained by the vessel for any such reasons.
- (e) If the Vessel or any person on board or any object, article, substance, equipment or installation on its board sinks, grounds or otherwise becomes or is likely to become, in the sole opinion of the Port Management, an obstruction, threat, hazard or danger to navigation, operations, safety, health, security or environment in or adjacent to the Port, then the Master shall upon receiving the Port Management request, without any delay allow the Port Management to remove or deal with the obstruction, threat, hazard, for which reasonable costs shall be paid by the Vessel / Owner.
- (f) It is mandated by Gujarat Maritime Board that pilotage in this Port for all vessels is compulsory. The Master of a Vessel shall alone be answerable for any loss or damage caused by the Vessel or by any fault of the navigation of the Vessel in a manner as he would have been at pilotage.
- (g) A no due certificate shall be issued by the Port subject to clearance of all outstanding invoices by the Vessel / Owner.
- (h) All disputes between the Port and the Vessel, its Owner, Master, agents and charterers shall be subject to the exclusive jurisdiction of the Courts at Gujarat in India.

Signature:

Name: Capt.

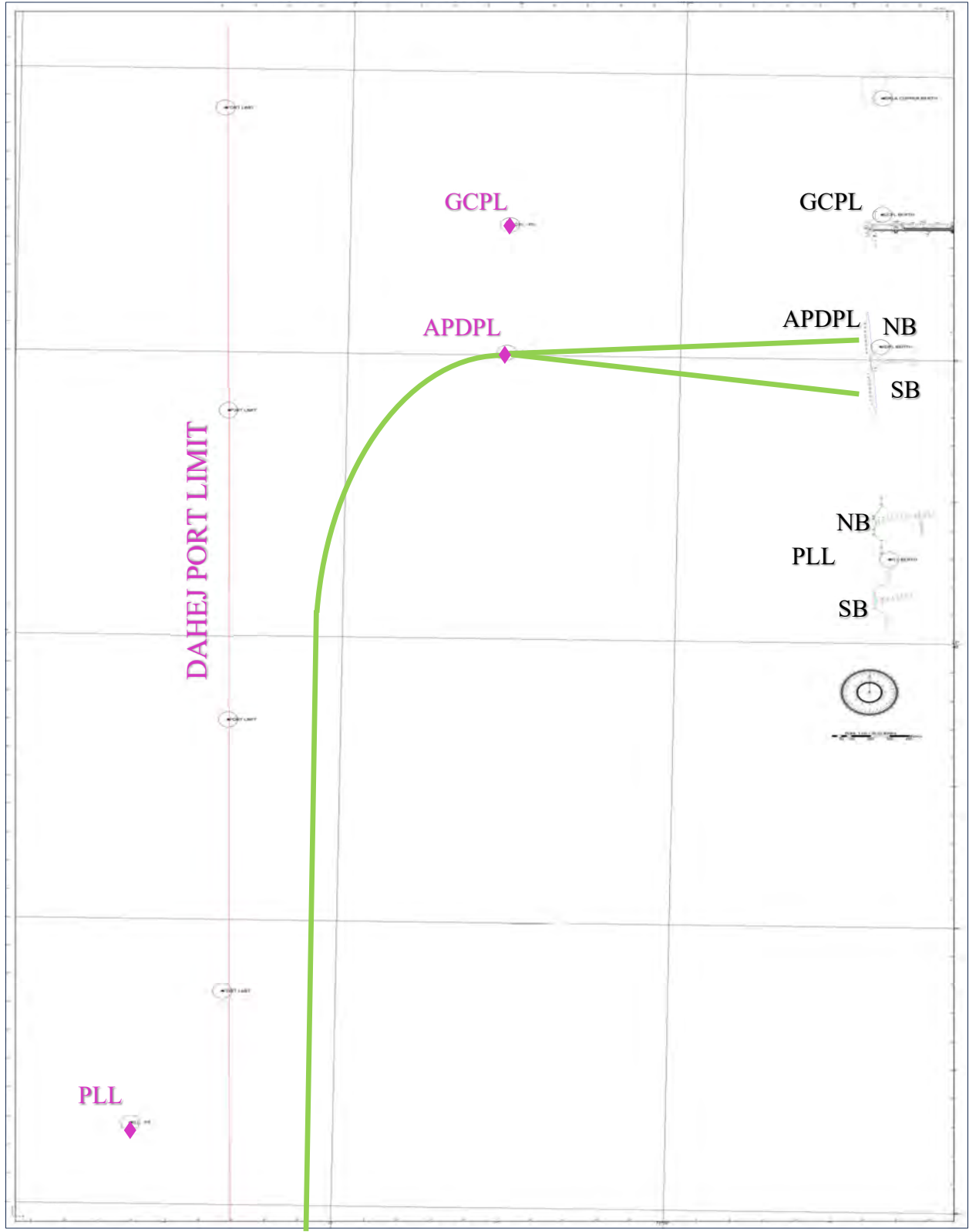
(For and on behalf of) VESSEL OWNER/ MASTER (with Seal)

* "**Port Facilities**" mean all facilities, assets, equipment and installations, whether the same are fixed or movable, including, without limitation, the channel, berths, bunkering, loading facilities including buoys or other channel markings.

* "**Port Services**" mean any service advice, instruction or assistance tendered or provided by the Port Management to Vessel, including, without limitation, by way of pilotage, towage, tug assistance, mooring, berthing, ingress egress or other navigational services.

Reviewed By: Capt. Alok Priyadarshi	Issue No: 00	Revision No: 02
Approved By: Capt. Girish Chandra	Issued on: 03 Aug 2025	

Annexure IV: MASTER – PILOT INFORMATION EXCHANGE



Reviewed By: Capt. Alok Priyadarshi	Issue No: 00	Revision No: 02
Approved By: Capt. Girish Chandra	Issued on: 03 Aug 2025	

Annexure V: TIDE TABLE

DAHEJ - 2025

LATITUDE 21° 43'N, LONGITUDE 072° 35'E

TIMES AND HEIGHTS OF HIGH AND LOW WATERS

JAN		FEB		MAR		APR									
TIME	Ht	TIME	Ht	TIME	Ht	TIME	Ht								
h m	m	h m	m	h m	m	h m	m								
0515	9.10	0002	1.14	0025	0.54	0054	1.53	0520	9.61	0000	1.33	0036	0.39	0034	1.88
1	1207 1.94	16	0602 9.29	1	0620 9.58	16	0640 8.94	1	1203 0.27	16	0543 8.83	1	0614 9.06	16	0616 7.90
	1733 7.28		1253 1.14		1307 0.66		1321 0.91		1745 9.00		1217 0.69		1246 -0.41		1228 0.97
WED	2347 0.94	THU	1824 7.63	SAT	1846 8.38	SUN	1909 8.23	SAT		SUN	1808 8.76	TUE	1849 10.04	WED	1836 8.95
0554	9.26	0039	1.38	0108	0.67	0125	1.83	0011	0.24	0030	1.47	0121	0.80	0104	2.16
2	1247 1.70	17	0635 9.18	2	0700 9.45	17	0713 8.61	2	0558 9.60	17	0612 8.67	2	0659 8.62	17	0649 7.55
	1814 7.47		1328 1.16		1345 0.46		1347 1.06		1239 -0.06		1241 0.73		1326 -0.04		1256 1.27
THU		FRI	1901 7.65	SUN	1932 8.54	MON	1944 8.17	SUN	1827 9.29	MON	1838 8.78	WED	1939 9.76	THU	1907 8.74
0031	0.94	0115	1.71	0153	1.01	0158	2.23	0054	0.39	0059	1.74	0210	1.38	0137	2.49
3	0634 9.33	18	0709 8.97	3	0741 9.11	18	0748 8.10	3	0637 9.38	18	0643 8.34	3	0749 8.03	18	0724 7.14
	1327 1.46		1401 1.26		1425 0.44		1414 1.33		1316 -0.16		1305 0.90		1410 0.66		1328 1.68
FRI	1858 7.61	SAT	1940 7.62	MON	2022 8.59	TUE	2022 7.99	MON	1912 9.40	TUE	1909 8.66	THU	2034 9.28	FRI	1943 8.48
0116	1.10	0151	2.11	0242	1.54	0234	2.71	0137	0.80	0129	2.10	0307	2.03	0217	2.83
4	0717 9.27	19	0745 8.63	4	0827 8.56	19	0825 7.45	4	0719 8.95	19	0716 7.86	4	0847 7.33	19	0805 6.73
	1410 1.27		1433 1.41		1508 0.63		1444 1.72		1355 0.00		1332 1.21		1502 1.58		1407 2.19
SAT	1947 7.72	SUN	2022 7.55	TUE	2119 8.52	WED	2105 7.74	TUE	2000 9.30	WED	1942 8.44	FRI	2140 8.69	SAT	2028 8.18
0205	1.41	0230	2.56	0337	2.17	0315	3.23	0225	1.40	0202	2.53	0424	2.55	0308	3.15
5	0802 9.03	20	0823 8.13	5	0919 7.87	20	0907 6.75	5	0806 8.33	20	0751 7.30	5	1001 6.68	20	0858 6.36
	1454 1.15		1505 1.65		1557 1.02		1520 2.21		1437 0.47		1401 1.65		1615 2.51		1457 2.74
SUN	2041 7.81	MON	2108 7.44	WED	2226 8.40	THU	2155 7.47	WED	2056 9.00	THU	2019 8.13	SAT	2302 8.21	SUN	2129 7.89
0258	1.84	0313	3.04	0445	2.76	0407	3.71	0320	2.11	0240	3.01	0555	2.65	0422	3.32
6	0851 8.62	21	0906 7.50	6	1022 7.13	21	1000 6.10	6	0900 7.57	21	0830 6.70	6	1148 6.44	21	1010 6.17
	1542 1.13		1540 1.95		1659 1.52		1607 2.71		1527 1.18		1436 2.19		1754 3.00		1610 3.17
MON	2143 7.91	TUE	2201 7.33	THU	2342 8.32	FRI	2259 7.27	THU	2203 8.60	FRI	2104 7.79	SUN		MON	2246 7.74
0358	2.31	0404	3.50	0612	3.06	0527	4.03	0432	2.75	0329	3.46	0027	8.01	0554	3.12
7	0946 8.09	22	0955 6.82	7	1143 6.57	22	1113 5.67	7	1008 6.81	22	0921 6.15	7	0713 2.37	22	1139 6.37
	1634 1.19		1620 2.29		1815 1.90		1714 3.08		1633 1.99		1523 2.76		1324 6.77		1746 3.20
TUE	2252 8.07	WED	2302 7.27	FRI		SAT		FRI	2324 8.26	SAT	2205 7.50	MON	1921 2.92	TUE	
0507	2.70	0510	3.86	0059	8.38	0014	7.30	0608	2.98	0443	3.79	0137	8.03	0002	7.84
8	1048 7.52	23	1055 6.22	8	0743 2.88	23	0728 3.88	8	1144 6.33	23	1035 5.79	8	0815 1.97	23	0707 2.59
	1733 1.31		1712 2.61		1313 6.40		1241 5.65		1804 2.51		1633 3.22		1429 7.31		1258 7.00
WED		THU		SAT	1935 1.99	SUN	1843 3.09	SAT		SUN	2325 7.41	TUE	2026 2.58	WED	1911 2.76
0003	8.31	0009	7.32	0209	8.54	0125	7.59	0048	8.18	0639	3.65	0232	8.13	0108	8.11
9	0626 2.87	24	0643 3.95	9	0857 2.41	24	0843 3.33	9	0737 2.68	24	1208 5.87	9	0904 1.60	24	0804 1.93
	1158 7.06		1206 5.85		1435 6.63		1400 6.05		1328 6.44		1812 3.25		1516 7.82		1358 7.84
THU	1839 1.38	FRI	1816 2.78	SUN	2046 1.82	MON	2003 2.65	SUN	1933 2.52	MON		WED	2118 2.20	THU	2018 2.11
0111	8.60	0112	7.50	0309	8.73	0225	8.07	0201	8.29	0044	7.66	0315	8.24	0203	8.41
10	0746 2.73	25	0812 3.70	10	0955 1.89	25	0931 2.68	10	0845 2.16	25	0758 3.06	10	0944 1.31	25	0853 1.24
	1312 6.83		1321 5.80		1538 7.01		1458 6.68		1444 6.91		1332 6.43		1551 8.24		1446 8.68
FRI	1946 1.35	SAT	1925 2.70	MON	2144 1.56	TUE	2106 1.99	MON	2043 2.22	TUE	1940 2.75	THU	2159 1.87	FRI	2115 1.47
0213	8.89	0207	7.78	0359	8.90	0316	8.60	0300	8.48	0149	8.12	0349	8.32	0252	8.66
11	0857 2.37	26	0912 3.29	11	1041 1.48	26	1012 2.00	11	0937 1.67	26	0851 2.32	11	1017 1.09	26	0937 0.60
	1422 6.84		1426 6.04		1626 7.37		1544 7.36		1537 7.41		1432 7.22		1621 8.58		1531 9.41
SAT	2049 1.23	SUN	2027 2.38	TUE	2232 1.34	WED	2159 1.29	TUE	2137 1.86	WED	2046 2.00	FRI	2235 1.64	SAT	2205 0.95
0309	9.11	0256	8.15	0440	9.02	0400	9.08	0345	8.64	0243	8.61	0419	8.38	0338	8.80
12	0957 1.95	27	0958 2.83	12	1121 1.19	27	1050 1.34	12	1019 1.31	27	0936 1.57	12	1047 0.92	27	1019 0.06
	1525 7.02		1517 6.43		1703 7.65		1625 8.00		1616 7.81		1519 8.04		1647 8.86		1614 9.98
SUN	2145 1.08	MON	2122 1.90	WED	2313 1.23	THU	2245 0.71	WED	2220 1.57	THU	2139 1.26	SAT	2307 1.53	SUN	2251 0.63
0401	9.26	0340	8.55	0513	9.09	0441	9.43	0421	8.75	0329	9.02	0447	8.39	0423	8.85
13	1049 1.58	28	1038 2.36	13	1155 1.02	28	1127 0.75	13	1054 1.05	28	1016 0.86	13	1113 0.80	28	1100 -0.31
	1619 7.25		1601 6.89		1736 7.87		1705 8.56		1648 8.13		1600 8.79		1713 9.05		1657 10.33
MON	2235 0.99	TUE	2211 1.39	THU	2349 -1.23	FRI	2329 0.34	THU	2257 1.38	FRI	2227 0.67	SUN	2337 1.53	MON	2336 0.53
0446	9.33	0422	8.95	0542	9.12			0450	8.82	0411	9.28	0515	8.33	0508	8.78
14	1134 1.33	29	1115 1.87	14	1226 0.91			14	1124 0.87	29	1054 0.24	14	1138 0.75	29	1140 -0.42
	1705 7.44		1642 7.35		1806 8.05				1715 8.39		1641 9.40		1739 9.13		1742 10.43
TUE	2321 1.00	WED	2257 0.94	FRI				FRI	2330 1.30	SAT	2311 0.32	MON		TUE	
0526	9.34	0502	9.29	0022	1.33			0516	8.87	0451	9.38	0006	1.66	0021	0.64
15	1215 1.19	30	1153 1.41	15	0610 9.09			15	1152 0.75	30	1131 -0.21	15	0545 8.17	30	0554 8.59
	1746 7.57		1722 7.76		1255 0.88				1741 8.61		1721 9.84		1203 0.80		1221 -0.24
WED		THU	2341 0.63	SAT	1836 8.18			SAT		SUN	2353 0.23	TUE	1807 9.09	WED	1829 10.28
			0541 9.52								0532 9.31				
			1230 0.99								1208 -0.46				
			1803 8.11								1804 10.06				
		FRI									MON				

Warning:- Predictions are given for average meteorological conditions. It follows that when conditions are not average the actual tides may differ from those predicted. Under extreme conditions these differences can be very large.
See Cautionary Note

Reviewed By: Capt. Alok Priyadarshi	Issue No: 00	Revision No: 02
Approved By: Capt. Girish Chandra	Issued on: 03 Aug 2025	



ADANI PETRONET (DAHEJ) PORT LIMITED INTEGRATED MANAGEMENT SYSTEM FORMATS MANUAL

DAHEJ - 2025

LATITUDE 21° 43'N, LONGITUDE 072° 35'E

TIMES AND HEIGHTS OF HIGH AND LOW WATERS

MAY			JUN			JUL			AUG														
TIME	Ht		TIME	Ht		TIME	Ht		TIME	Ht													
h m	m		h m	m		h m	m		h m	m													
0108	0.95		0047	2.31		0244	1.60		0201	2.11		0301	1.48		0224	1.24		0321	1.85		0319	1.00	
1	0643	8.25	16	0626	7.30	1	0819	7.36	16	0734	7.27	1	0847	7.49	16	0808	7.99	1	0940	7.68	16	0939	8.57
	1304	0.27		1231	1.39		1428	2.16		1346	1.88		1455	2.68		1427	1.83		1548	3.44		1602	2.70
THU	1919	9.90	FRI	1842	8.92	SUN	2042	8.79	MON	1951	8.93	TUE	2050	8.36	WED	2016	8.83	FRI	2136	7.02	SAT	2138	7.38
	0159	1.39		0123	2.46		0340	1.84		0247	2.01		0344	1.75		0306	1.20		0358	2.31		0414	1.51
2	0736	7.78	17	0704	7.11	2	0924	7.07	17	0826	7.29	2	0944	7.36	17	0902	8.07	2	1038	7.50	17	1052	8.39
	1350	1.05		1308	1.71		1529	2.89		1438	2.24		1548	3.23		1520	2.29		1649	3.89		1723	3.16
FRI	2012	9.35	SAT	1921	8.77	MON	2138	8.23	TUE	2040	8.68	WED	2138	7.75	THU	2104	8.33	SAT	2232	6.33	SUN	2254	6.73
	0258	1.87		0207	2.59		0439	2.03		0337	1.91		0428	2.05		0353	1.28		0445	2.75		0528	2.02
3	0835	7.25	18	0748	6.90	3	1043	6.98	18	0926	7.38	3	1048	7.34	18	1004	8.15	3	1146	7.41	18	1214	8.35
	1445	1.98		1351	2.12		1642	3.40		1539	2.60		1651	3.65		1622	2.76		1827	4.10		1859	3.14
SAT	2114	8.73	SUN	2007	8.57	TUE	2241	7.72	WED	2135	8.32	THU	2233	7.13	FRI	2201	7.72	SUN	2344	5.86	MON		
	0409	2.21		0300	2.68		0536	2.14		0431	1.80		0517	2.33		0447	1.46		0549	3.07		0028	6.43
4	0950	6.80	19	0841	6.74	4	1202	7.16	19	1034	7.61	4	1157	7.46	19	1114	8.28	4	1255	7.48	19	0655	2.21
	1557	2.84		1445	2.57		1758	3.60		1648	2.87		1809	3.83		1737	3.09		2008	3.88		1332	8.50
SUN	2227	8.18	MON	2104	8.32	WED	2346	7.33	THU	2237	7.94	FRI	2337	6.62	SAT	2309	7.16	MON			TUE	2022	2.67
	0525	2.30		0404	2.66		0632	2.17		0529	1.67		0610	2.53		0553	1.64		0108	5.75		0200	6.64
5	1130	6.70	20	0949	6.72	5	1305	7.52	20	1144	8.02	5	1259	7.68	20	1227	8.50	5	0705	3.10	20	0814	2.03
	1727	3.30		1555	2.94		1910	3.49		1804	2.94		1930	3.74		1903	3.11		1356	7.71		1439	8.75
MON	2344	7.83	TUE	2210	8.10	THU			FRI	2342	7.60	SAT			SUN			TUE	2110	3.47	WED	2126	2.06
	0632	2.19		0512	2.45		0048	7.08		0630	1.50		0046	6.30		0027	6.81		0221	6.00		0312	7.12
6	1255	7.02	21	1107	6.99	6	0722	2.13	21	0722	8.53	6	0705	2.61	21	0705	1.69	6	0813	2.81	21	0919	1.67
	1849	3.30		1718	3.03		1356	7.94		1920	2.78		1352	7.93		1336	8.78		1448	8.04		1535	9.00
TUE			WED	2319	7.97	FRI	2012	3.21	SAT			SUN	2037	3.47	MON	2023	2.77	WED	2152	3.02	THU	2216	1.51
	0052	7.67		0617	2.09		0144	6.96		0048	7.39		0151	6.23		0146	6.78		0314	6.44		0405	7.61
7	0730	2.00	22	1220	7.57	7	0808	2.04	22	0732	1.28	7	0758	2.54	22	0816	1.55	7	0910	2.34	22	1012	1.33
	1355	7.52		1838	2.82		1437	8.32		1350	9.04		1437	8.17		1439	9.07		1532	8.42		1620	9.18
WED	1955	3.03	THU			SAT	2104	2.90	SUN	2030	2.44	MON	2128	3.17	TUE	2130	2.27	THU	2228	2.55	FRI	2258	1.09
	0148	7.64		0024	7.94		0233	6.93		0153	7.34		0246	6.33		0257	7.02		0355	6.93		0446	7.99
8	0819	1.78	23	0716	1.63	8	0848	1.91	23	0831	1.01	8	0846	2.34	23	0919	1.31	8	0958	1.80	23	1056	1.12
	1440	8.01		1322	8.31		1514	8.61		1445	9.47		1517	8.39		1536	9.32		1611	8.82		1656	9.27
THU	2048	2.67	FRI	1948	2.40	SUN	2147	2.64	MON	2132	2.02	TUE	2210	2.90	WED	2226	1.75	FRI	2302	2.08	SAT	2335	0.82
	0234	7.65		0123	7.98		0315	6.97		0254	7.43		0331	6.55		0357	7.36		0432	7.41		0521	8.27
9	0900	1.57	24	0810	1.13	9	0925	1.75	24	0926	0.74	9	0930	2.05	24	1014	1.07	9	1042	1.30	24	1135	1.06
	1517	8.44		1415	9.04		1546	8.80		1538	9.76		1554	8.60		1626	9.50		1648	9.16		1728	9.30
FRI	2132	2.33	SAT	2050	1.91	MON	2224	2.48	TUE	2227	1.64	WED	2246	2.66	THU	2313	1.34	SAT	2336	1.61	SUN		
	0312	7.69		0218	8.04		0352	7.03		0352	7.59		0410	6.82		0448	7.69		0508	7.83		0008	0.66
10	0935	1.38	25	0900	0.65	10	0958	1.59	25	1018	0.57	10	1011	1.74	25	1103	0.93	10	1124	0.95	25	0553	8.47
	1548	8.78		1504	9.65		1616	8.92		1628	9.92		1629	8.82		1710	9.58		1724	9.41		1210	1.14
SAT	2210	2.08	SUN	2144	1.48	TUE	2258	2.41	WED	2318	1.34	THU	2320	2.41	FRI	2356	1.05	SUN			MON	1757	9.26
	0346	7.72		0310	8.12		0426	7.11		0445	7.76		0446	7.10		0532	7.93		0010	1.19		0038	0.62
11	1006	1.22	26	0948	0.25	11	1031	1.44	26	1107	0.54	11	1052	1.45	26	1147	0.95	11	0544	8.19	26	0624	8.59
	1617	9.02		1551	10.08		1647	8.98		1716	9.94		1704	9.04		1748	9.58		1205	0.78		1243	1.35
SUN	2244	1.95	MON	2235	1.16	WED	2330	2.37	THU			FRI	2355	2.15	SAT			MON	1759	9.51	TUE	1828	9.09
	0418	7.72		0401	8.18		0500	7.19		0006	1.16		0522	7.35		0035	0.90		0044	0.83		0106	0.69
12	1034	1.11	27	1033	0.01	12	1105	1.34	27	0535	7.87	12	1132	1.24	27	0611	8.07	12	0622	8.48	27	0656	8.63
	1644	9.14		1638	10.31		1718	9.04		1154	0.69		11740	9.23		1228	1.13		1246	0.82		1315	1.66
MON	2315	1.94	TUE	2323	0.99	THU			FRI	1801	9.85	SAT			SUN	1823	9.49	TUE	1834	9.45	WED	1900	8.77
	0449	7.69		0451	8.20		0004	2.33		0051	1.10		0030	1.87		0111	0.86		0119	0.60		0133	0.89
13	1102	1.05	28	1118	-0.01	13	0534	7.25	28	0622	7.89	13	0559	7.57	28	0649	8.13	13	0703	8.67	28	0730	8.56
	1711	9.17		1725	10.32		1140	1.32		1239	1.03		1213	1.16		1306	1.44		1328	1.07		1348	2.09
TUE	2345	2.02	WED			FRI	1751	9.08	SAT	1844	9.64	SUN	1816	9.34	MON	1857	9.28	WED	1912	9.19	THU	1934	8.26
	0520	7.60		0011	0.99		0039	2.28		0135	1.14		0107	1.61		0144	0.94		0156	0.52		0159	1.22
14	1129	1.06	29	0541	8.14	14	0610	7.28	29	0709	7.80	14	0638	7.74	29	0728	8.10	14	0748	8.76	29	0806	8.35
	1739	9.12		1203	0.22		1218	1.39		1323	1.51		1256	1.24		1343	1.86		1412	1.50		1422	2.60
WED			THU	1813	10.14	SAT	1827	9.11	SUN	1925	9.32	MON	1854	9.34	TUE	1932	8.93	THU	1953	8.74	FRI	2011	7.61
	0015	2.16		0059	1.11		0118	2.20		0218	1.27		0145	1.38		0217	1.14		0235	0.65		0227	1.67
15	0552	7.47	30	0631	7.97	15	0650	7.28</															



ADANI PETRONET (DAHEJ) PORT LIMITED INTEGRATED MANAGEMENT SYSTEM FORMATS MANUAL

DAHEJ - 2025

LATITUDE 21° 43'N, LONGITUDE 072° 35'E

TIMES AND HEIGHTS OF HIGH AND LOW WATERS

SEP		OCT		NOV		DEC									
TIME	Ht	TIME	Ht	TIME	Ht	TIME	Ht								
h m	m	h m	m	h m	m	h m	m								
0342	2.80	0517	2.47	0404	3.31	0043	6.84	0026	6.81	0216	8.02	0044	7.92	0220	8.18
1	1035 7.37	16	1205 8.23	1	1056 7.37	16	0642 2.86	1	0635 3.06	16	0824 2.66	1	0709 2.71	16	0848 2.89
1703 4.07	1855 2.78	1809 3.67	1300 8.06	1234 7.78	1409 7.48	1244 7.57	1416 6.64	1930 2.12	2035 1.45	1244 7.57	1416 6.64	2031 1.91			
MON 2252 5.21	TUE	WED 2344 5.86	THU 1939 1.89	SAT 1930 2.12	SUN 2035 1.45	MON 1932 1.37	TUE 2031 1.91								
0445 3.29	0044 6.49	0539 3.49	0157 7.38	0129 7.55	0257 8.42	0140 8.60	0300 8.42								
2	1151 7.26	17	0654 2.61	2	1216 7.47	17	0755 2.58	2	0747 2.52	17	0914 2.35	2	0816 2.29	17	0937 2.63
1918 3.98	1324 8.30	1932 3.18	1401 8.11	1331 7.99	1453 7.44	1342 7.58	1503 6.65	2021 1.51	2114 1.32	1453 7.44	1618 6.65	2111 1.82			
TUE	WED 2009 2.26	THU	FRI 2033 1.51	SUN 2021 1.51	MON 2114 1.32	TUE 2026 0.94	WED 2111 1.82								
0024 5.64	0211 6.97	0112 6.35	0250 7.93	0219 8.35	0332 8.73	0232 9.23	0336 8.59								
3	0616 3.43	18	0812 2.31	3	0713 3.11	18	0852 2.21	3	0846 1.91	18	0956 2.10	3	0915 1.83	18	1018 2.46
1308 7.46	1429 8.49	1324 7.83	1449 8.17	1422 8.19	1530 7.43	1437 7.66	1543 6.72	2107 0.91	2149 1.22	1530 7.43	1618 6.65	2147 1.69			
WED 2031 3.47	THU 2107 1.70	FRI 2026 2.52	SAT 2117 1.19	MON 2107 0.91	TUE 2149 1.22	WED 2117 0.52	THU 2147 1.69								
0152 6.04	0311 7.56	0213 7.10	0330 8.38	0303 9.09	0403 8.93	0321 9.72	0408 8.70								
4	0745 3.07	19	0912 1.90	4	0822 2.43	19	0939 1.88	4	0938 1.36	19	1033 1.97	4	1009 1.43	19	1053 2.36
1410 7.87	1519 8.67	1419 8.26	1528 8.20	1509 8.35	1605 7.42	1531 7.77	1618 6.64	2150 0.37	2220 1.14	1605 7.42	1618 6.65	2220 1.54			
THU 2117 2.85	FRI 2152 1.23	SAT 2111 1.82	SUN 2155 0.96	TUE 2150 0.37	WED 2220 1.14	THU 2206 0.18	FRI 2220 1.54								
0250 6.67	0355 8.06	0259 7.89	0404 8.72	0346 9.69	0431 9.05	0410 10.04	0438 8.78								
5	0850 2.41	20	1000 1.54	5	0917 1.70	20	1019 1.64	5	1026 0.96	20	1107 1.94	5	1059 1.13	20	1126 2.31
1501 8.37	1559 8.79	1505 8.64	1601 8.22	1554 8.44	1637 7.41	1624 7.89	1652 6.98	2232 -0.06	2248 1.10	1637 7.41	1652 6.98	2254 1.41			
FRI 2155 2.21	SAT 2231 0.90	SUN 2151 1.14	MON 2228 0.81	WED 2232 -0.06	THU 2248 1.10	FRI 2254 0.01	SAT 2254 1.41								
0333 7.35	0430 8.42	0338 8.63	0433 8.97	0429 10.11	0459 9.08	0500 10.17	0509 8.85								
6	0942 1.71	21	1040 1.31	6	1004 1.09	21	1054 1.52	6	1112 0.74	21	1137 2.01	6	1149 0.97	21	1157 2.25
1543 8.83	1632 8.85	1546 8.91	1632 8.21	1640 8.45	1709 7.38	1717 7.96	1725 7.10	2314 -0.29	2316 1.11	1709 7.38	1725 7.10	2328 1.34			
SAT 2231 1.58	SUN 2302 0.69	MON 2229 0.54	TUE 2257 0.73	THU 2314 -0.29	FRI 2316 1.11	SAT 2341 0.06	SUN 2328 1.34								
0410 7.99	0500 8.70	0417 9.25	0459 9.14	0514 10.31	0527 9.05	0549 10.11	0541 8.92								
7	1027 1.10	22	1116 1.22	7	1048 0.67	22	1126 1.51	7	1157 0.72	22	1207 2.11	7	1238 0.93	22	1230 2.16
1621 9.19	1701 8.86	1626 9.04	1701 8.15	1728 8.37	1741 7.32	1809 7.95	1800 7.19	2356 -0.27	2345 1.19	1741 7.32	1800 7.19				
SUN 2306 1.00	MON 2334 0.57	TUE 2305 0.05	WED 2323 0.72	FRI 2356 -0.27	SAT 2345 1.19	SUN	MON								
0446 8.55	0528 8.90	0455 9.73	0525 9.22	0602 10.27	0557 8.98	0029 0.36	0005 1.35								
8	1109 0.68	23	1148 1.24	8	1130 0.48	23	1156 1.62	8	1244 0.87	23	1238 2.23	8	0639 9.89	23	0615 8.96
1658 9.39	1729 8.81	1705 9.03	1731 8.02	1818 8.18	1815 7.22	1328 0.99	1305 2.04	1818 8.18	1815 7.22	1328 0.99	1305 2.04	1836 7.24			
MON 2340 0.51	TUE	WED 2342 -0.26	THU 2348 0.79	SAT	SUN	MON 1902 7.82	TUE 1836 7.24								
0522 9.00	0001 0.55	0536 10.01	0553 9.19	0040 0.06	0017 1.35	0118 0.88	0044 1.47								
9	1149 0.49	24	0555 9.03	9	1212 0.52	24	1225 1.83	9	0652 10.01	24	0630 8.88	9	0730 9.52	24	0651 8.95
1734 9.42	1219 1.38	1747 8.88	1803 7.80	1335 1.16	1312 2.32	1419 1.13	1342 1.90	1335 1.16	1312 2.32	1419 1.13	1342 1.90	1917 7.25			
TUE	WED 1758 8.66	THU	FRI	SUN 1910 7.86	MON 1852 7.07	TUE 1958 7.61	WED 1917 7.25								
0014 0.15	0026 0.62	0020 -0.34	0014 0.96	0127 0.67	0052 1.62	0210 1.56	0127 1.70								
10	0600 9.32	25	0624 9.05	10	0620 10.08	25	0622 9.05	10	0746 9.56	25	0706 8.74	10	0821 9.04	25	0730 8.86
1230 0.54	1249 1.64	1256 0.78	1254 2.09	1431 1.51	1351 2.40	1513 1.31	1423 1.79	2008 7.46	1933 6.91	1351 2.40	1423 1.79	2002 7.27			
WED 1810 9.28	THU 1830 8.35	FRI 1831 8.57	SAT 1837 7.50	MON 2008 7.46	TUE 1933 6.91	WED 2059 7.38	THU 2002 7.27								
0049 -0.03	0051 0.82	0100 -0.11	0041 1.24	0221 1.49	0133 1.99	0308 2.27	0213 2.02								
11	0642 9.49	26	0654 8.93	11	0708 9.90	26	0654 8.84	11	0845 9.00	26	0748 8.56	11	0915 8.48	26	0812 8.63
1312 0.82	1319 2.00	1343 1.22	1326 2.38	1536 1.80	1438 2.45	1607 1.51	1506 1.70	2118 7.08	2021 6.77	1438 2.45	1506 1.70	2053 7.33			
THU 1850 8.96	FRI 1903 7.91	SAT 1921 8.11	SUN 1912 7.14	TUE 2118 7.08	WED 2021 6.77	THU 2210 7.23	FRI 2053 7.33								
0126 0.03	0116 1.16	0143 0.43	0112 1.63	0327 2.32	0223 2.40	0413 2.88	0306 2.38								
12	0727 9.46	27	0727 8.69	12	0801 9.50	27	0729 8.57	12	0953 8.44	27	0837 8.32	12	1013 7.90	27	0859 8.29
1356 1.31	1350 2.43	1438 1.78	1403 2.68	1647 1.93	1533 2.43	1704 1.70	1553 1.64	2247 6.91	2120 6.72	1533 2.43	1553 1.64	2153 7.48			
FRI 1934 8.45	SAT 1939 7.36	SUN 2016 7.53	MON 1953 6.77	WED 2247 6.91	THU 2120 6.72	FRI 2327 7.29	SAT 2153 7.48								
0206 0.38	0144 1.61	0233 1.24	0149 2.12	0449 2.91	0323 2.79	0526 3.26	0406 2.72								
13	0819 9.23	28	0803 8.35	13	0903 8.95	28	0811 8.26	13	1107 8.00	28	0934 8.05	13	1116 7.38	28	0954 7.85
1447 1.93	1426 2.90	1546 2.28	1450 2.96	1754 1.89	1633 2.32	1800 1.84	1646 1.61	2154 1.89	2229 6.87	1633 2.32	1646 1.61	2259 7.74			
SAT 2025 7.78	SUN 2018 6.78	MON 2124 6.94	TUE 2042 6.42	THU	FRI 2229 6.87	SAT	SUN 2259 7.74								
0252 1.01	0218 2.17	0338 2.15	0236 2.66	0016 7.13	0436 3.01	0036 7.54	0517 2.95								
14	0920 8.83	29	0846 7.96	14	1020 8.43	29	0905 7.94	14	0612 3.09	29	1038 7.81	14	0641 3.33	29	1055 7.41
1551 2.58	1511 3.36	1712 2.47	1554 3.13	1217 7.72	1735 2.10	1220 6.98	1744 1.57	2127 7.72	2341 7.30	1735 2.10	1744 1.57				
SUN 2128 7.06	MON 2107 6.24	TUE 2300 6.62	WED 2146 6.21	FRI 1855 1.76	SAT 2341 7.30	SUN 1854 1.93	MON								
0351 1.81	0301 2.77	0510 2.78	0340 3.13	0124 7.56	0554 2.98	0133 7.87	0006 8.14								
15	1037 8.42	30	0941 7.58	15	1145 8.12	30	1012 7.69	15	0724 2.95	30	1143 7.64	15	0750 3.17	30	0635 2.96
1720 2.96	1617 3.70	1833 2.27	1716 3.05	1317 7.56	1835 1.77	1322 6.74	1203 7.09	2148 1.60	SUN	1835 1.77	1203 7.09	1849 1.45			
MON 2254 6.50	TUE 2214 5.85	WED	THU 2307 6.31	SAT 1948 1.60	SUN	MON 1945 1.96	TUE 1849 1.45								
			0507 3.32				0111 8.60								
			1127 7.64				0752 2.71								
			1831 2.67				1313 6.96								
			FRI				WED 1953 1.23								

Warning:- Predictions are given for average meteorological conditions. It follows that when conditions are not average the actual tides may differ from those predicted. Under extreme conditions these differences can be very large.
See Cautionary Note

Reviewed By: Capt. Alok Priyadarshi	Issue No: 00	Revision No: 02
Approved By: Capt. Girish Chandra	Issued on: 03 Aug 2025	

Annexure VI: WEATHER

This port weather is predominantly divided in 2 category-

- NE monsoon
- SW monsoon

Northeast Monsoon



Southwest Monsoon



1. All the weather forecasts can be seen on the below link-

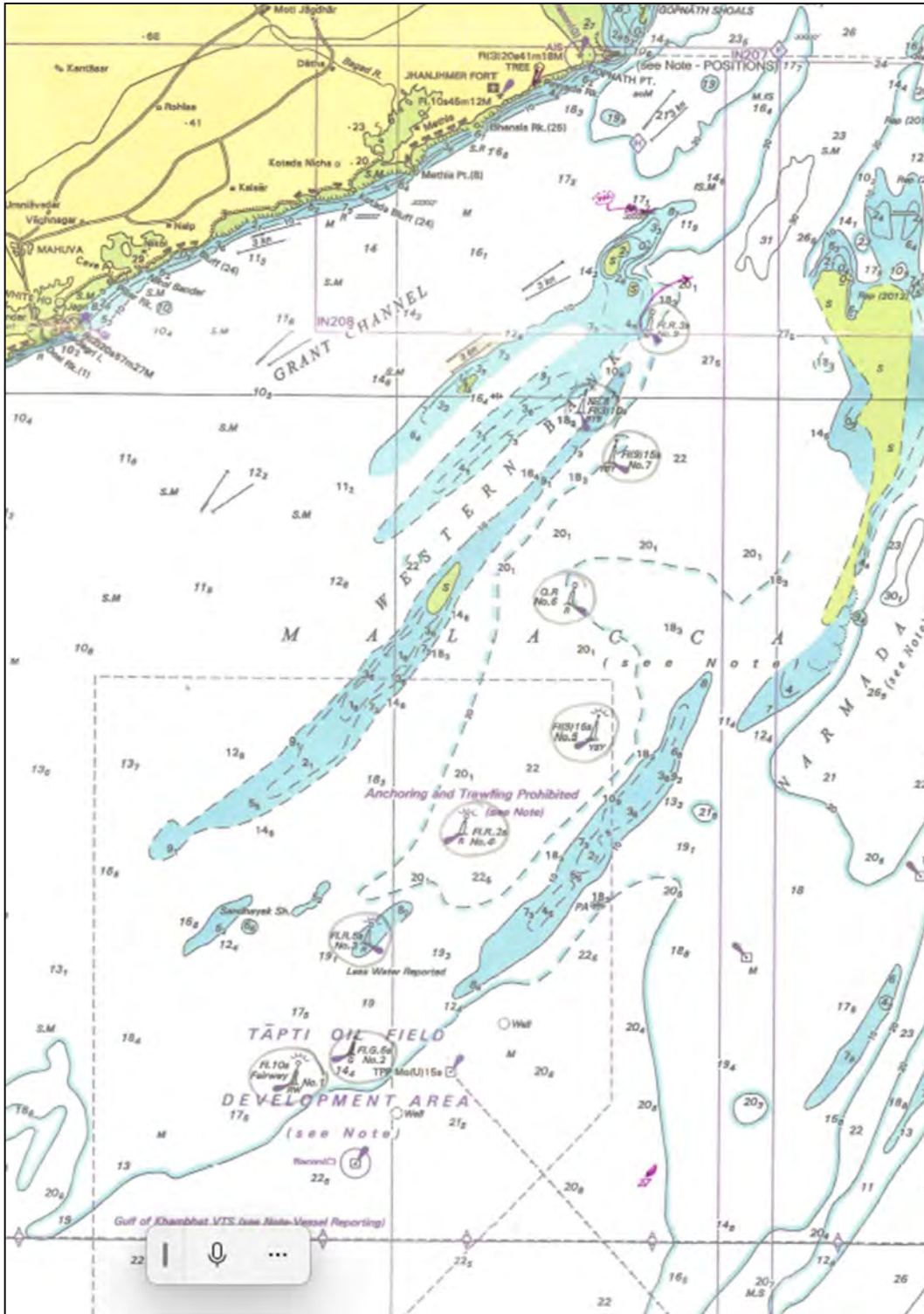
https://nwp.imd.gov.in/blf/blf_temp/block.php?dis=12BHARUCH

2. Alternatively, weather data is also sent by port on email.

Reviewed By: Capt. Alok Priyadarshi	Issue No: 00	Revision No: 02
Approved By: Capt. Girish Chandra	Issued on: 03 Aug 2025	

Annexure VII: BUOYAGE SYSTEM WITH CO-ORDINATES

Please see below extract of nautical chart **INT 7331 IN254- Approaches to Gulf of Khambhat** depicting Narmada navigation buoyage-



Reviewed By: Capt. Alok Priyadarshi	Issue No: 00	Revision No: 02
Approved By: Capt. Girish Chandra	Issued on: 03 Aug 2025	

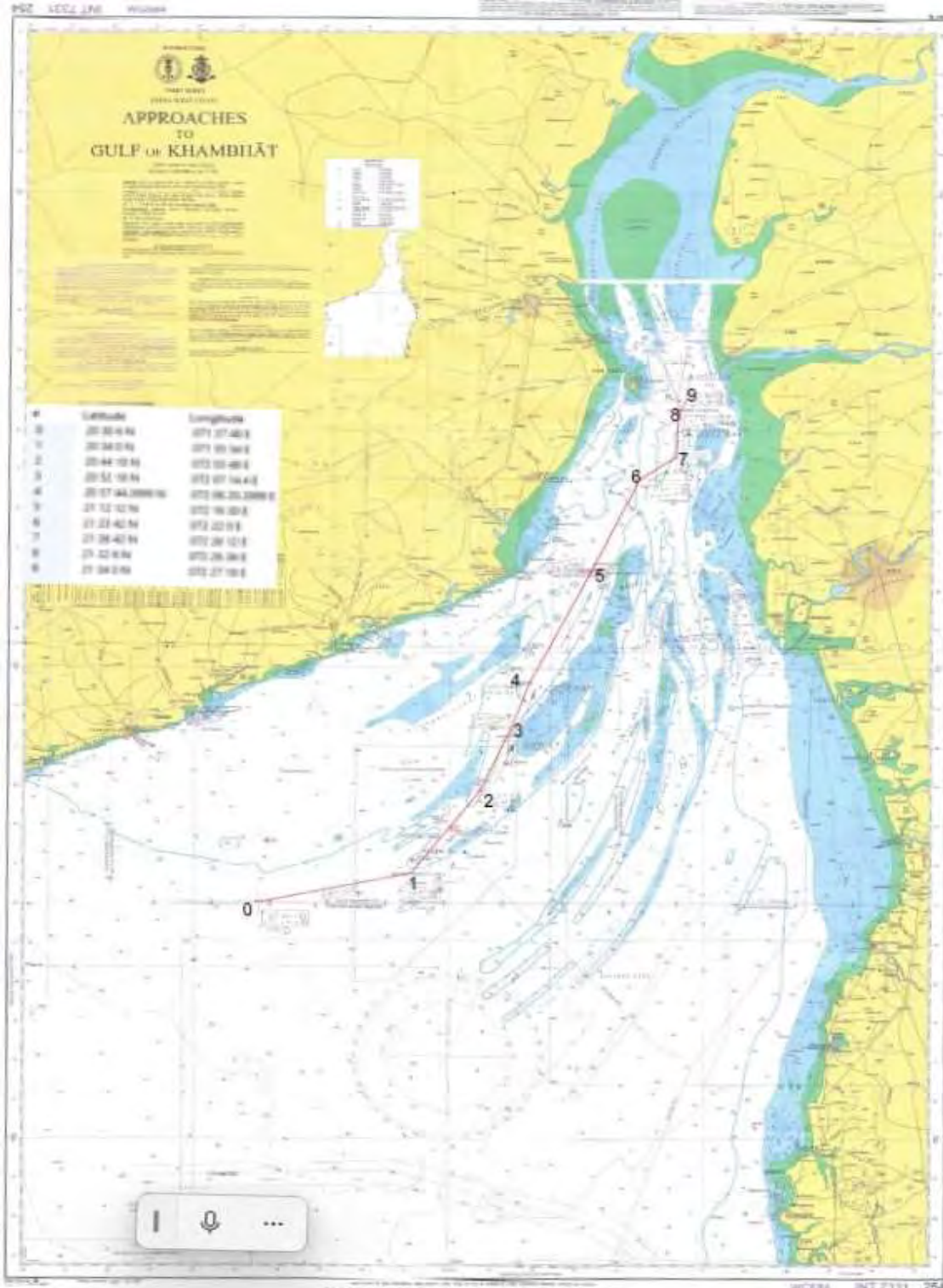
Please find the below list of navigation buoyage available in Narmada Channel-

Buoy	Status of Light	Charted Position
Buoy No.1 FWB	Operational	20°35.61'N 071°56.30'E
Buoy No.2 Lateral Green	Operational	20°36.60'N 071°58.51'E
Buoy No.3 Lateral Red	Operational	20°40.63'N 071°59.02'E
Buoy No.4 Lateral Red	UNLIT	20°45.50N 072°03.00'E
Buoy No.5 West Cardinal	UNLIT	20°47.90'N 072°07.29'E
Buoy No.6 Lateral Red	Operational	20°52.70N 072°06.35'E
Buoy No.7 west Cardinal	Operational	20°56.00'N 072°09.50'E
Buoy No.8 east Cardinal	Operational	20°59.54'N 072°06.70'E
Buoy No.9 Lateral Red	Operational	21°02.57'N 072°09.26'E

Reviewed By: Capt. Alok Priyadarshi	Issue No: 00	Revision No: 02
Approved By: Capt. Girish Chandra	Issued on: 03 Aug 2025	

Annexure VIII: DEEP WATER ROUTE

Details of this route (way points) is provided by VTMS and the agency. VTMS is monitoring the route and traffic in this area. See below for guidance only-



Reviewed By: Capt. Alok Priyadarshi	Issue No: 00	Revision No: 02
Approved By: Capt. Girish Chandra	Issued on: 03 Aug 2025	

Annexure IX: VTMS COVERAGE

All Vessels in the VTS area or intending to enter VTS area must do mandatory reporting to Gulf of Khambhat VTS. Please see below detail of VTMS-

VTMS Khambhat Master Control Station, Near Marine Police Station, Hazira, Surat, Gujarat, India

Location: Lat 21°08.345' N Lon 072°44.085' E

Tel: +91-261-6586788, +91-99099 03748

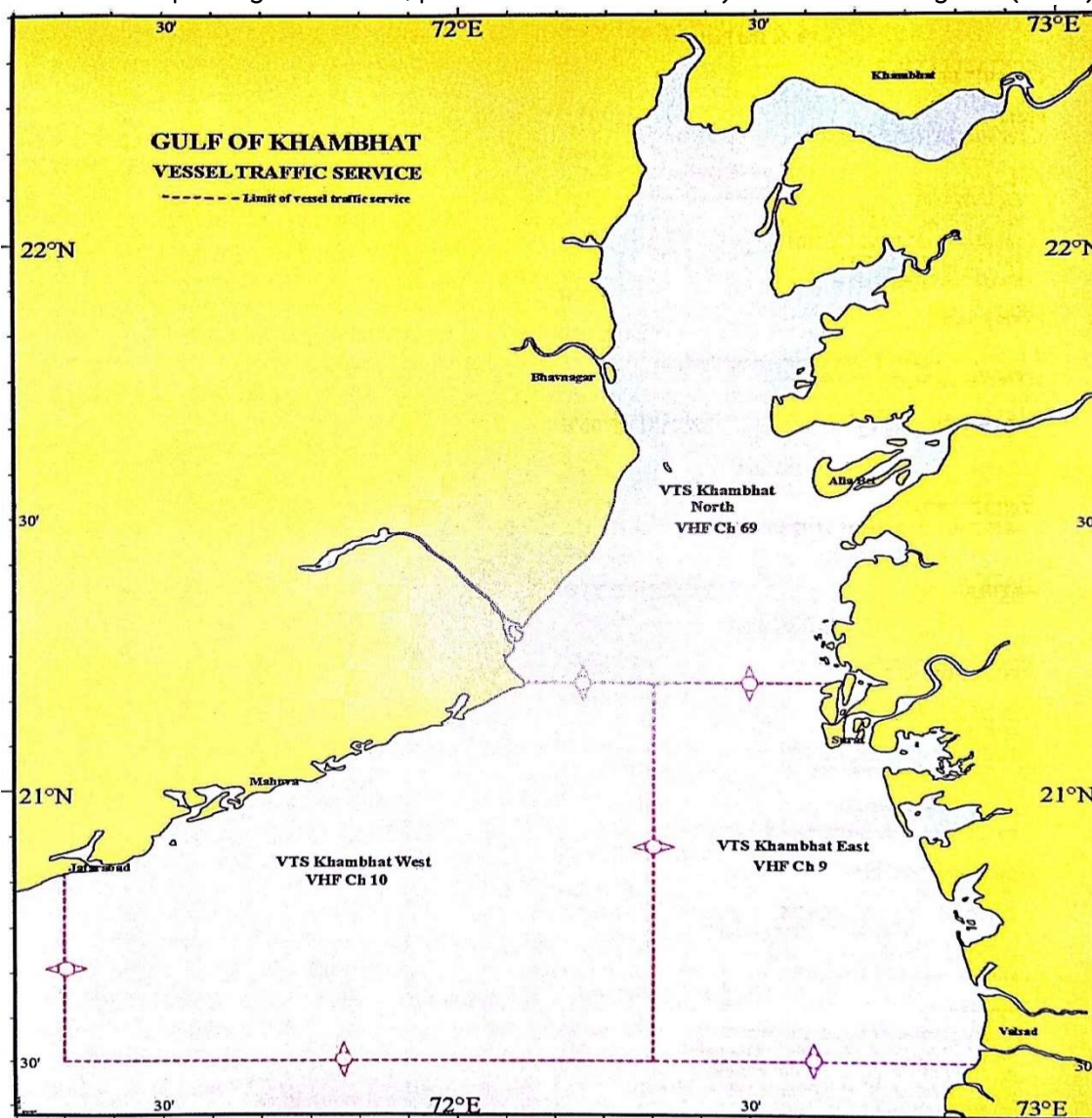
Email: vtskhambhat@aatash.com

Website: <http://www.aatash.com>

Service Provided:

Information Service [INS], Navigational assistance Service [NAS] Traffic Organization [TOS]

Note: For detailed Reporting Procedure, please refer to Admiralty List of Radio Signals (ALRS) Vol-5.



Reviewed By: Capt. Alok Priyadarshi	Issue No: 00	Revision No: 02
Approved By: Capt. Girish Chandra	Issued on: 03 Aug 2025	

Annexure X: NAVAREA / METAREA

Be guided by the below diagram for the same-



Reviewed By: Capt. Alok Priyadarshi	Issue No: 00	Revision No: 02
Approved By: Capt. Girish Chandra	Issued on: 03 Aug 2025	